

Trusted Worldwide by Mining, Cement, Aggregate, Power Gen. Oil and Gas, Ports, and Major Processing Operations Since 2006. The 2sp Solution Providers Inc. Lower Sub-Sahara Program.



**Legend Screw
Splice® for
Max Reliability**



**NRX
NanoPrime®
Advanced
Technology**



Bob Spicer – Engineer, EMBA
Founder and Managing Director
Telephone: +1.514.335.4275
Mobile: WhatsApp or FaceTime:
+1.514.778.0265 Bob@2sp.ca



Leonardo Arrieta
V-P Development and Training
Telephone: +1.514.335.4275
Mobile: WhatsApp or FaceTime:
+1.514.512.6176

Things have changed. We listen and deliver proven custom solutions that you can trust.

→ We offer **PROOF OF VALUE** – A free demo or a rental with a portion of rental applied towards the purchase.

This affords an excellent opportunity to evaluate the product's advantages + benefits delivered to the operation.

- Most items are normally ready for immediate shipment from our Solwezi stock, by air courier, air or ocean freight.
- Products are manufactured in USA, Canada, Australia, China and EU – under ISO quality control compliance.
- Our Group provides experienced, licensed trade professionals for emergency outages and planned requirements.
- And we provide certified training for plant personnel in safety, operating and maintenance procedures.
- Reliable spare parts available for most makes and models conveyor belt scrapers, fast and at competitive pricing.
- We are adding belt conveyor and abrasion-resistant solutions. If you don't see what you need, please ask.
- And yes, we're here long after the sale to support the operation – and we support the guarantees of what we sell.

Our Lower Sub-Sahara Team: Supporting Region from Zambia/DR Congo to S. Africa/Botswana/Zimbabwe



In Zambia, please contact:
Patuma Kazembe, Technical Sales Manager
Mobile - WhatsApp: +260.768.168.700
Patuma@2sp.ca

Other countries, contact: info@2sp.ca
Bob Spicer – WhatsApp: +1.514.778.0265
or Leonardo Arrieta: +1.514.512.6176
Distributor opportunities may be available.

Professional Contract Service Team:

Licensed professionals for planned and 24/7 emergency contract services.
We install and guarantee what we sell.
Application of RubbaFIX® and Dura-Coat®, conveyor belt splicing, maintenance and repair, and full pump operational services.

Our Mobile Solids Transfer Pump Division Has Expanded:

Supavac® pumps and engineered systems are now available for purchase, long-term or short-term rental with option to purchase. Contract services are provided to operate and maintain pumps. Specializing in the removal of accumulated solids from lined mill water sludge ponds to underground mine drainage sumps; upset mill sumps and process vessels; product transfers; recovery and return of valuable spilled product; emergency spills response.

2sp Solution Providers Inc. Corporate Office + Manufacturing + International Distribution Facilities

5825 St-Francois Road, Montreal, QC H4S 1B6 (Canada) – After Hours and Holidays: Please contact any team member.
Tel: +1.514.335.4275 or WhatsApp – If not available, please leave detailed message. Your call will be returned promptly.

info@2sp.ca for order placement, accounting, special inquiries and other. www.2sp.ca

Expanding Distributor-Installer and Agent network. Opportunities available. Contact Bob Spicer directly.



Save the Belt – Upgrade to the Only One-Part Rubber Repair

Are you interested but unsure? Ask for a complimentary demo in your plant.

Exclusive Master Distributor

Safe to view videos: <https://vimeo.com/282732075> <https://RubbaFIX.com.au>



Mini and Melta Pro models for small & large belt repairs 115/1/60 or 230/1/50.

No mixing ever required and no more waste

Repair badly damaged belt covers and holes. Constant 70 duro rubber remains flexible, providing outstanding adhesion and long life.

Secure elevator buckets.

Flexco® plate and hinged fasteners can now be covered - cut maintenance



Permanently repair long rips, belt edge, holes, cover, gouge damage – ask how.

By covering Super Screw® fasteners, prevent scrapers from catching/damaging edge of uneven belt steps.

With a smooth repaired cover, belt scrapers will clean more effectively.

Unique advantages of RubbaFIX® w/only 1 component – not available with any 2-component polyurethane kits:

- No longer a need to mix and never any wastage. Unlimited shelf life, even when opened.
 - Simply add rubber pucks to the applicator gun, heat and apply to the preheated areas of belt to be repaired.
 - If belting is damaged all the way through, add reinforced fabric sheets between the RubbaFIX® layers.
 - RubbaFIX® rubber remains a flexible 70 durometer long after application, will not harden or crack and can be reworked by reheating at any time.
 - Superior adhesion to rubber belting, Nitrile solid-woven belting, metals, fiberglass and much more.
 - FRAS certified. Fire-resistant and anti-static for underground mines and critical locations.
 - NO toxic fumes, unlike polyurethane – refer to the MSDS.
 - Ready to buff and return to service in only 30 minutes.
 - NO need to ever clean the applicator gun – just leave any unused rubber and you are ready for the next task.
 - Repairs to all type of conveyor belts; chute and hopper linings; ball mill rubber liner bars; tank linings; rubber-lined pumps, impellers, valves, and diaphragms; filler putty between rubber sheeting; pulley lagging; rubber conveyor rollers; non-structural, off highway tire repairs; rubber expansion joint repair – ask for info.
 - Unlike cold patches and bulky belt clips, the repaired areas remain even with the top cover, ensuring that sharp scrapers do not get caught on an uneven cover or belt edge – and will clean the belt more effectively.
 - Approved for operation w/SSP-770 Ceramic Belt Cleaners® and Titan Screw Splice® and other belt fasteners.
 - Fill the open void area above Super Screw® and other mechanical belt fasteners and the top belt cover level. This provides an extra protective layer to resist moisture, corrosion, abrasion, and especially impact.
- Damage is avoidable:** Ensure that sharp tungsten carbide scrapers blades do not get caught on the edge of uneven steps and rip the fastener and damage belt, especially high-speed and high-capacity belt conveyors.
- We can equip your Team with RubbaFIX® rubber and Melta Pro® and Mini applicator machines and provide training so that your operation is prepared to proactively protect belt conveyors from damage and downtime. Consider reserving the 2sp contract site services team anytime for planned and emergency requirements.

**Legend Screw
Splice® for
Max Reliability**

Directly from manufacturer.

We radically improved the screw splice & patented new technology. Proven solutions with international experience to reliably splice and repair damaged belts at a more reasonable cost with faster delivery. Turnkey installation or supervision is available in many countries. And ask about The Performance Guarantee.

Patented-only from Legend®



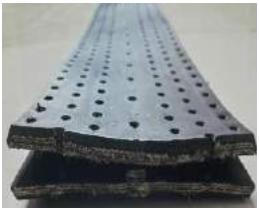
Upgrade to the patented Legend BH-350-HD (see details below for BH-254). The most reliable screw splice available w/2 rows of M5 plus 2 rows of M8 screws each side, no more spacers, titanium cloth reinforced, w/the highest to 2,800 N/mm rating, top and bottom segments factory vulcanized together at center, = superior impact resistance, durability, and longer service life. Premium 50mm3 (RMA-1) rubber = max. abrasion/cut resistance. Can be custom made to meet specific belt specifications. Supplied in custom kits or various size rolls – please refer to chart. The legendary alternative to vulcanization, especially when time, location, and weather are limiting factors. LEGEND® is proven to last long after install, while many other fasteners continue to fail.

LEGEND® Split-Segment Design: These patented conveyor screw fasteners splice belts and repair sections w/inserts for long rips/damaged belts, available to 2,500 N/mm.



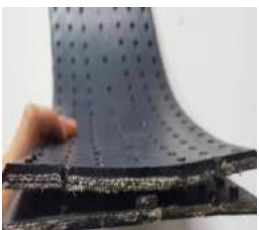
LEGEND BH-120 Split Conveyor Belt Screw Splice – with standard spacers.

Two lines of M4.8 screws on each side + middle line secures joint. All nuts are securely vulcanized into the bottom segment. The top and bottom segments are split, designed for belt joint of light weight conveyor belts. Tension to 800 N/mm.



LEGEND BH-180 Split Screw Splice + Inserts for Damage and Long Rip Repair

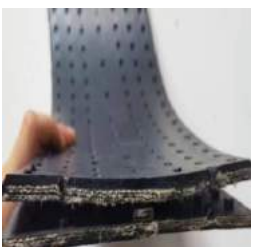
NO spacers. Three rows of M4.8 screws on each side + middle line. All nuts are securely vulcanized into bottom segment. With 3-ply top and 3-ply bottom HD fabric reinforced segments, a strong, secure joint is ensured. Belt tension to 1,200 N/mm.



LEGEND BH-254 Joined Screw Splice w/Top & Bottom Segments Vulcanized.

Same patented technology as BH-350-XHD as detailed above.

Three lines of M4.8 screws each side. All nuts are securely vulcanized into the bottom segment. With top and bottom segments, each with heavy-duty fabric reinforcement layers, a strong, secure joint is ensured. Belt tension to 1,600 N/mm.



LEGEND BH-260-HD Split Screw Splice + Inserts for Damage & Long Rip Repair

NO spacers. One line of M4.8 + two lines of M6 screws on each side. Nuts securely vulcanized into the bottom segment. With top and bottom segments, each with heavy-duty fabric reinforcement layers, a strong, secure joint is ensured. Centre row of screws secures into rubber positioning strip for splice. eliminates need for spacers providing superior impact resistance. Highest declared belt tension to 2,500 N/mm.

Legend Screw Splice® and Insert Repair-General Specifications ① ② ③ ④

Proven Solutions to Reliably Splice Anywhere, Anytime, Any Weather. Finally at a Reasonable Cost

LEGEND® MODELS →	BH-120	BH-180	BH-254	BH-260-HD	BH-350-HD
LEGEND® SPECIFICATION DETAILS	Splice	Splice + Std Repair Damage/Long Rips	Splice	Splice + HD Repair Damage/Long Rips	Splice
Design - Top and Bottom Segments Patented only mechanical splice w/segments joined ④	TWO Separate Segments	TWO Separate Segments	④ TWO segments vulcanized at centre	TWO Separate Segments	④ TWO segments vulcanized at centre
Recommended EP belt spec. incl. (check tension rating)	All	All	315, 400, 500 and 630	All	800, 1000, 1200, 1250 and 1600
Belt Tension - N/mm (highest declared industry rating)	400 to 800	600 to 1200	800 to 1600	1200 to 2500	1200 to 2800
Belt Tension – PIW (highest declared industry rating)	285 to 575	430 to 860	575 to 1145	860 to 1795	860 to 2010
Reinforcement (based on belt tension rating)	Canvas	Canvas	Canvas or Titanium	Canvas or Titanium	Canvas or Titanium
Splice or Repair Width (mm)	120	180	254	260	350
Splice or Repair Width (inches)	4.72	7.09	10	10.2	13.8
Minimum Pulley Diameter (~mm - based tension rating)	250 to 350	250 to 350	350 to 400	350 to 650	500 to 800
Screw Dimensions - Metric (number of rows of screws)	(5) M4.8	(7) M4.8	(7) M4.8	7 = (2) M4.8 + (5) M6	8 = (4) M5 + (4) M8
Screw Dimensions - Imperial (number rows of screws)	(5) 0.19	(7) 0.19	(7) 0.19	7 = (2) 0.19 + (5) 0.24	8 = (4) 0.20 + (4) 0.31
Standard Screw + Vulcanized Insert Material	Carbon Steel	Carbon Steel	Carbon Steel	Carbon Steel	Carbon Steel
Optional Non-Mag. Screw + Vulcanized Insert Material	316 Stainless Steel	316 Stainless Steel	316 Stainless Steel	316 Stainless Steel	316 Stainless Steel
Total quantity Screws & Specification (per m - 3.3 ft)	226 x M4.8	337 x M4.8	311 x M4.8	144 x M4.8 + 162 x M6	203 x M5 + 75 x M8
Quantity of PZ Bits (included per meter – per 3.3 feet)	1	1	1	1	1
Number of Spacers (Included per meter – per 3.3 feet)	18	No spacers	No spacers	No spacers	No spacers
When no spacers–Positioning strip or center vulcanized	Spacers	Positioning strip vulcan. to top seg.	Segments vulcanized together at centre	Positioning strip vulcan. to top segment	Segments vulcanized together at centre
Standard Top and Bottom Segment Thicknesses (mm)	5.0 + 3.8 6.0 + 3.8	7.5 + 4.5 8.5 + 4.5	6.0 + 5.0 7.0 + 5.0	8.5 + 5.5 10 + 5.5	9 + 5.5 and 11 + 5.5 12 + 5.5 and 13 + 5.5
Standard Top and Bottom Segment Thicknesses (inch)	0.20 + 0.15 0.24 + 0.15	0.30 + 0.18 0.34 + 0.18	0.24 + 0.20 0.28 + 0.20	0.33 + 0.22 0.39 + 0.22	0.35, 0.43, 0.47 and 0.51 + 0.22
Optional: Different Top/Bottom Segments are available	On request	On request	Available on request	Available on request	Available on request
Weight – kgs/m. (lbs/ft) – Vary on thickness/tension	2.8 (1.8)	3.1 (2.1)	4.3 (2.9)	4.7 (3.2)	7.8 (5.2)
Standard Segment Rubber: Abrasion & cut resistant →	RMA-1 – 50mm3	RMA-1 – 50mm3	RMA-1 – 50mm3	RMA-1 – 50mm3	RMA-1 – 50mm3
Optional Rubber: Economical for standard duty →	RMA-2 - 150mm3	RMA-2 - 150mm3	RMA-2 - 150mm3	RMA-2 - 150mm3	RMA-2 - 150mm3
Other Optional Segment Rubber	Heat-Resistant	Heat-Resistant	Heat-Resistant	Heat-Resistant	Heat-Resistant
Other Optional Segment Rubber	Oil-Resistant	Oil-Resistant	Oil-Resistant	Oil-Resistant	Oil-Resistant
Other Optional Segment Rubber	Low Temperature	Low Temperature	Low Temperature	Low Temperature	Low Temperature
Other Optional Segment Rubber	Friction Back	Friction Back	Friction Back	Friction Back	Friction Back
Available in Custom Kits to suit any belt width (mm)	800, 1000, 1200, 1400 and 1600 +	800, 1000, 1200, 1400 and 1600 +	800, 1000, 1200, 1400 and 1600 +	800, 1000, 1200, 1400 and 1600 +	800, 1000, 1200, 1400 and 1600 +
Available in Custom Kits to suit any belt width (inches)	30, 42, 48, 56, 60+	30, 42, 48, 56, 60+	30, 42, 48, 56, 60 +	30, 42, 48, 56, 60 +	30, 42, 48, 56, 60 +
Available in Rolls w/hardware (meters and feet)	3, 5, 10, 15, 25 m 10, 16, 33, 50, 82ft	3, 5, 10, 15, 25 m 10, 16, 33, 50, 82ft	3, 5, 10, 15, 25 m 10, 16, 33, 50, 82 feet	3, 5, 10, 15, 25 m 10, 16, 33, 50, 82 feet	3, 5, 10, 15, 25 m 10, 16, 33, 50, 82 ft.
COMPARE w/Super Screw® models③	35 to 80	85 to 105	85 to 165	125 to 205	125 to 250
Super Screw® N/mm tension rating (PIW tension rating) Check for failures from over-tension & scraper damage.	315 to 800 (200 to 450)	800 to 1000 (450 to 570)	800 to 1600 (450 to 914)	1250 to 2000 (710 to 1140)	1250 to >2000 ??? (710 to >1430 ???)
Super Screw® splice width mm (inches)	72 - 160 (2.8 - 6.3)	156 (6.2)	156 - 266 (6.2 - 10.5)	156 - 266 (6.2 - 10.5)	266 (10.5)
Super Screw® rubber abrasion resistance rating. Model: Primary® (cheap rubber) Original/Evolution® >\$	150 + 50 mm3 RMA-2 + RMA-1	150 + 50 mm3 RMA-2 + RMA-1	150 + 50 mm3 RMA-2 + RMA-1	150 + 50 mm3 RMA-2 + RMA-1	150 + 50 mm3 RMA-2 + RMA-1

- ① Custom Legend Screw Splice® patented fasteners - available for any belt width, thickness, specification, and tension rating and supplied either in rolls to 25 meters (82 feet) or custom kits for any belt width, delivered complete, ready for immediate installation.
- ② Recommend application of RubbaFIX® hot rubber system to be applied over top of any mechanical fastener, as may be required with many mechanical fastener installations, even including the pricy ones, to ensure an even, flat top cover for unobstructed scraper operation and to prevent scraper from ever getting caught on uneven cover, causing damage to belt and premature splice failure.
- ③ Note: For comparison reference purpose use only. Legend® specifications and design may vary and even exceed Super Screw® specs. Super Screw® specs referenced herein as available from MLT. E+OE: Errors or omissions are strictly unintentional. Please contact 2sp for complete details, professional recommendation to meet any requirement and a custom quotation. Select international distribution. Legend® standard & custom fasteners are readily available from stock to ~2 weeks. Please request, complete, and return questionnaire.

NRX
NanoPrime®
Advanced
Technology

Master Distributor.

This proprietary water-based reactive system contains no VOCs, is non-toxic, non-flammable and eliminates expensive, time-consuming sandblast surface preparation with a simple, low-cost water wash.



NanoPrime® Advantages & Benefits Delivered to the Operation

- **NO MORE SANDBLASTING.**
- **SAFER** for employees and the environment.
- **NO** more heavy protective gear is required.
- **CAN BE APPLIED DIRECTLY OVER RUST**, galvanized, painted or unpainted steel, aluminum, and concrete w/simple wash.
- **FAST** application process – quick drying to the touch in only 30 minutes and is ready to re-coat in only 2 hours.
- **Up to 12 months shelf life**, even when opened and resealed.



How does NRX NanoPrime® Advanced Technology Work?

Works by chemically reacting with iron and iron oxide (rust) to form iron phosphate and creates a Nano bond with both metallic and painted surfaces.

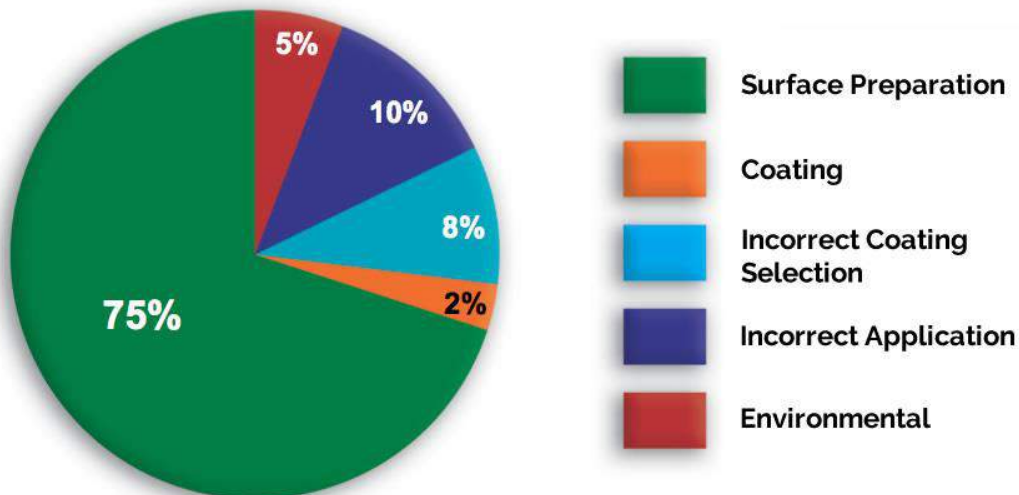
The chemically bonded layer is insoluble and extremely corrosion resistant.

This “bonding” process also provides superior adhesion and resiliency and stops under-film corrosion that occurs when conventional coatings are damaged.

Primer is thixotropic. The elasticity makes it very durable in temperature ranges from -67°C to +200°C (-90°F to +400°F).

Primer forms an excellent foundation for a variety of high-performance topcoats. Available in 5 and 20 litre containers. **Recommended with Dura-Coat® epoxy and epoxy-ceramics for maximum abrasion and corrosion protection.**

About 70% of the cost and 75% of the failures of coating systems relate directly to surface preparation. So why do coatings fail?





Exceptional Protection against Extreme Abrasion + Corrosion.
There is a difference: Only Dura-Coat® premium advanced technology epoxies are specially formulated w/proprietary ingredients enabling:

- 1. Application during high humidity – due to enhanced hydrophobic properties.**
- 2. Exceptional adhesion – even with minimum substrate preparation.**
- 3. Safe for personnel – NO dangerous toxic warnings. Check other product MSDS.**

Master Distributor

CASE STUDY: After a 7+ month evaluation on cyclone cluster and with outstanding results, this major African copper mine, part of a major Canadian mining group, just ordered their second 800 kgs of premium Dura-Coat FAST 356 extreme abrasion-resistant epoxy-ceramic.



Applied mid Aug 2022

Inspected end of Mar 2023

Comments made by plant management and maintenance personnel:

1. Mixes very easily with a minimum of surface preparation required.
2. Very workable, applies easily, especially on vertical surfaces.
3. Impressive that we can now apply faster and with 1000 mil thickness.
4. Minimum noticeable wear, impressive after seven months, and far outlasting Nordbak® which requires reapplication about every month.
5. Superior adhesion under extreme abrasive and high velocity conditions.



Flotation Cells – Metal 400



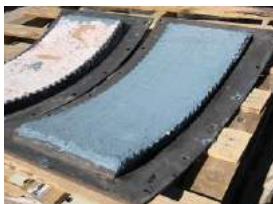
Screw Conveyors – 356 and 400



Iron ore reject tailings dewatering centrifugal pump – 356



Centrifugal and other pump types and pump stations – 356, 100 and 400



Copper transfer – 351, 356 and 400



Feed trunnion – 356



Concrete, secondary containment, flooring – 800, 830, 600, 870



Mill chutes – 356



Flue gas – 200HT



Vibrating screens



Heat exchanger/chiller – 200HT



Steel tank rivet leaks – 251



Tank lining – 200



Underwater – 121



Plant wide corrosion and abrasion protection



Radically cut carry back + Stop belt damage + Extend the effective service life by more than 4-times that of polyurethane scrapers – Guaranteed. 300mm to 2400mm promptly shipped fully assembled – ready to install.

We are the manufacturer.



Installation only ~2 hours.
Lightweight. Cleaners weigh only ~20 kg.



Users report: Virtually no maintenance or adjustment required.



Users report: ~95% removal of carry back when primary and secondary Cleaners installed.



Proven highly resistant to abrasion, corrosion, moisture & high heat.



Users have reported: "Cleaning in year two just like day-one"

**When polyurethane scrapers have failed due to extremely abrasive or high temperature solids . . .
When sharp tungsten carbide scraper blade edges have been destroyed due to the destructive effects of corrosive and abrasive materials . . . And have repeatedly damaged belt covers one time too many . .
Then it may be time to consider installing the Performance Guaranteed SSP-770 Ceramic Belt Cleaners®.**

No Nonsense Performance Guarantee: We will supervise the installation of primary and secondary Cleaners®. **We will prove** within 30 days that abrasive, corrosive, sticky, and hot carry back is radically reduced, belt cover damage is stopped, and the condition of Cleaners® remains virtually like day one, **you pay nothing.**



Polyurethane scrapers not able to withstand abrasion and degrade quickly when subject to high heat (clinker, etc.)



And for those applications where polyurethane or tungsten carbide scrapers are in use, we offer a quality belt scraper as a more cost-effective solution. And we supply replacement parts for most makes and models from stock.



**2sp Polyurethane
Primary Belt Scrapers.**



**2sp Tungsten Carbide
Secondary Belt Scrapers.**



**2sp Alloy
Primary Belt Cleaners.**



**2sp Alloy
Secondary Belt Cleaners.**



The Original patented mobile solids transfer pumps and systems.
2nd Generation Technology: Supavac® Next Gen Controls provide
variable discharge pressure/flow + save ≤30% in compressed air.

Master Distributor – Systems Integration and Turnkey Installations.



Engineered with mining in mind. Emptying these underground mine drainage sumps.



Yes, extremely thick oily waste now pumpable.



Courtesy of Vale



This lined mill water sludge sedimentation pond was emptied, and solids were automatically discharged 2,600 meters through three 100mm hdpe lines for disposal with zero-leaks.



Solids discharged up to one kilometer or more through piping with 7 bar pressure.



Accumulated settled hydrocarbon waste removed for disposal.



Overwhelmed submersible pump was rescued.



Accumulated mud and hard solids were removed from this canal.



Waste from this barge being removed.

Large sludge sedimentation lagoons • u/g drainage sumps • Mill upset sumps •

Reservoir bottoms • Transfer and recovery of valuable spilled product • Emergency response

Supavac® pneumatic-displacement solids transfer pumps have proven to do what no other pump can do with 25" Hg (85 kPa), vacuum recover tons of abrasive, corrosive and oily sludge and hazardous waste with hard solids to 3" (75mm), with a minimum volume of water, through long suction hose with the force of a vacuum truck, and with automatic discharge through long piping up to ≥3,000 feet (≥one kilometer) with up to 100 psi (7 bar) of pressure, all in one automatic operation. And without rotating parts or electricity, high reliability and a recent 20-year and still pumping report is the experience.

Select pump models are available for rental, with purchase option, recouping a portion of paid rentals.

Many pumps and systems are in stock or can be shipped within a few weeks. Spare parts and accessories are shipped quickly. Contract services are provided for operation of pumping system and include any maintenance required – for next shutdown or on long-term for daily cleanup of spills and sump cleanout.



More Supavac solids transfer pumps in operation underground and on surface.



Emptying typical u/g drainage sump



Typical mill water sludge lagoon with accumulated solids prior to mobilization of Supavac pump system. Vacuum recover settled sludge with hard solids with auto pressure discharge ~one kilometer as required.



Spilled valuable product is recovered and returned to belt.



Strong suction power is now available



Oilsands tails pond recovery made easy.



Suspended operation



Corrosive sludge transfer



Emptying barge



Quick Repair Kits for Pipe Leaks - ASME

Master Distributor.



Level 1 Wrap Steel for Unpressurized Leaks

- Repairs leak in 30 minutes
- Ready-to-use kit
- Available for pipes up to 18" (457 mm) diameter
- Withstand pressure up to 400 psi (28 kg/cm²)
- Withstand temperatures up to 392°F (200°C)
- Repairs T-joint, elbow joint, valve thread, valve body



Level 2 Ultra Wrap Steel for Active Leaks

- No shutdown is required.
- Repair leaks in only 15 minutes.
- Available for pipes up to 18" (457 mm) diameter
- Repairs under active leak up to 150 psi (11kg/cm²) pressure
- Withstand pressure up to 500 psi (35 kg/cm²)
- Withstand temperatures up to 392°F (200°C)



Level 3 U/Wrap for Active Steam and Chemical Leaks

Repairs leak in 30 minutes
Pressure up to 400 psi (28 kg/cm²)
Temperature up to 280°C (500°F)
Repairs w/active leak up to 150 psi
1/2" - 36" (12mm - 900mm) piping

Standard Kit comprises:

Stainless Steel Clamp with PTFE
Dura-Coat 2000 Wrap Steel
Custom Fiberglass Tape



Contract Site Services for Planned and 24/7 Emergencies



Courtesy of
Barrick



FEATURE: Repair belt conveyor damaged vulcanized joint with RubbaFIX®. And damaged covers, edges, rips and gouges.

NEW: Applying NanoPrime® unique primer saves time and costs and eliminates the need to ever sandblast again.

FEATURE: Simply remove accumulated solids from mill sludge settling pond with Supavac® pumps. And sumps, spills, product recovery and much more.

BONUS: Repair worn-out parts w/premium Dura-Coat® abrasion-resistant epoxy-ceramic grout.

PATENTED: Install Legend Screw Splice® mechanical belt fastener with team training – quick and simple in any weather, location and at any time.

Our Zambian operation is in Solwezi, in the heart of Northwest province mining center and very close to southeast DR Congo. We are ready to respond to your every requirement in Zambia, DR Congo and Lower Sub-Sahara countries.

We install everything that we sell, provide personnel training in installation, operation, maintenance, safety procedures, and are readily available for troubleshooting, and to support the guarantee. Our Group is ready to supply temporary or long-term personnel for emergency & planned requirements. 2sp Group experienced professionals are fully licensed – boilermakers-welders, belt conveyor technicians, mechanical and electrical maintenance technicians and in the application nano technology primer (eliminating sandblasting) and abrasion and corrosion-resistant epoxy-ceramic grout & coatings.