

**Legend Screw  
Splice® for  
Maximum  
Reliability**

*Direct from manufacturer*

**We radically improved the screw splice + patented new technology. A better solution is now available with international experience to reliably splice and repair damaged belts at a more reasonable cost. Supervision or turnkey installation available virtually worldwide. In stock or fast delivery. And ask about Performance Guarantee.**



**Upgrade to the patented Legend-BH-350-HD (and BH-254 see details below). The strongest, most reliable screw splice w/2 rows of M5 plus 2 rows of M8 screws each side, no spacers, titanium cloth reinforced, w/the highest 2800 N/mm industry rating, top and bottom segments factory vulcanized together at center, resulting in superior impact resistance and a longer service life. Premium 50mm3 (RMA-1) rubber = max. abrasion/cut resistance.**

**Recommended for all belt specifications up to 3150/6.**

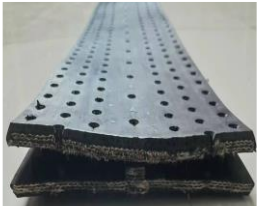
**Supplied in custom kits or various size rolls – refer to chart. The legendary alternative to vulcanization, especially when time, location, and weather are limiting factors. LEGEND® is proven to last long after install, while most other fasteners continue to fail.**

**LEGEND® Split-Segment Design: Choose the best screw fasteners to splice belts and repair damage w/inserts into wide & long damaged sections, available to 2500 N/mm**



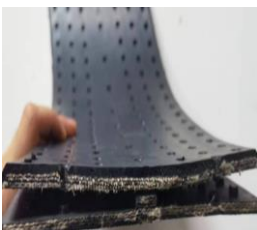
**LEGEND BH-120 Split Conveyor Belt Screw Splice – with standard spacers.**

Two lines of M4.8 screws on each side + middle line secures joint. All nuts are securely vulcanized into the bottom segment. The top and bottom segments are split, designed for joining light weight conveyor belts. Tension to 800 N/mm.



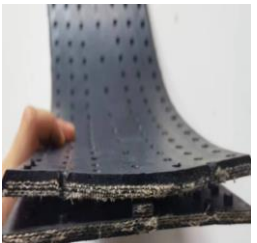
**LEGEND BH-180 Split Screw Splice + Inserts for Damage and Long Rip Repair**

**NO spacers.** Three rows of M4.8 screws on each side + middle line. All nuts are securely vulcanized into bottom segment. With 3-ply top and 3-ply bottom HD fabric reinforced segments, a strong, secure joint is ensured. Belt tension to 1200 N/mm.



**LEGEND BH-254 Joined Screw Splice w/Top & Bottom Segments Vulcanized. Same patented technology as BH-350-HD as detailed above.**

Three lines of M4.8 screws each side. All nuts are securely vulcanized into the bottom segment. With top and bottom segments, each with heavy-duty fabric reinforcement layers, a strong, secure joint is ensured. Belt tension to 1600 N/mm.



**LEGEND BH-260-HD Split Screw Splice + Inserts for Damage & Long Rip Repair**

**NO spacers.** One line of M4.8 + two lines of M6 screws on each side. Nuts securely vulcanized into the bottom segment. With top and bottom segments, each with heavy-duty fabric reinforcement layers, a strong, secure joint is ensured. Centre row of screws secures into rubber positioning strip for splice. Eliminates need for spacers providing superior impact resistance. Highest declared belt tension to 2500 N/mm.

# Legend Screw Splice® and Insert Repair - General Specifications ① ② ③ ④

Proven Solutions to Reliably Splice Anywhere, Anytime, Any Weather. Finally at a Reasonable Cost

LEGEND® MODELS →	BH-120	BH-180	BH-254	BH-260-HD	BH-350-HD
LEGEND® SPECIFICATION DETAILS	Splice	Splice + Std Repair Damage/Long Rips	Splice	Splice + HD Repair Damage/Long Rips	Splice
Design - Top and Bottom Segments <b>Patented. Only mechanical splice w/segments joined ④</b>	TWO Separate Segments	TWO Separate Segments	④ TWO segments vulcanized at centre	TWO Separate Segments	④ TWO segments vulcanized at centre
Recommended max EP belt spec. (check tension rating)	Check tension	Check tension	Up to 2000/4	Check tension	Up to 3150/6
Belt Tension - N/mm (highest declared industry rating)	400 to 800	600 to 1200	800 to 1600	1200 to 2500	1200 to 2800
Belt Tension – PIW (highest declared industry rating)	285 to 575	430 to 860	575 to 1145	860 to 1795	860 to 2010
Reinforcement (based on belt tension rating)	Canvas	Canvas	Canvas or Titanium	Canvas or Titanium	Canvas or Titanium
Total Effective Splice or Repair Width (mm)	120	180	194	260	280
Total Effective Splice or Repair Width (inches)	4.72	7.09	7.64	10.24	11.02
Minimum Pulley Diameter (~mm - based tension rating)	250	250	350	350	500
Screw Dimensions - Metric (number of rows of screws)	(5) M4.8	(7) M4.8	(7) M4.8	7 = (2) M4.8 + (5) M6	8 = (4) M5 + (4) M8
Screw Dimensions - Imperial (number rows of screws)	(5) 0.19	(7) 0.19	(7) 0.19	7 = (2) 0.19 + (5) 0.24	8 = (4) 0.20 + (4) 0.31
Standard Screw + Vulcanized Insert Material	Carbon Steel	Carbon Steel	Carbon Steel	Carbon Steel	Carbon Steel
Optional Non-Mag. Screw + Vulcanized Insert Material	316 Stainless Steel	316 Stainless Steel	316 Stainless Steel	316 Stainless Steel	316 Stainless Steel
Total quantity Screws & Specification (per m - 3.3 ft)	226 x M4.8	337 x M4.8	311 x M4.8	144 x M4.8 + 162 x M6	203 x M5 + 75 x M8
Quantity of PZ Bits (included per meter – per 3.3 feet)	1	1	1	1	1
Number of Spacers (Included per meter – per 3.3 feet)	18	No spacers	No spacers	No spacers	No spacers
When no spacers–Positioning strip or center vulcanized	Spacers	Positioning strip vulcan. to top seg.	Segments vulcanized together at centre	Positioning strip vulcan. to top segment	Segments vulcanized together at centre
Standard Top and Bottom Segment Thicknesses (mm)	5.0 + 3.8 6.0 + 3.8	7.5 + 4.5 8.5 + 4.5	6.0 + 5.0 7.0 + 5.0	8.5 + 5.5 10 + 5.5	9 + 5.5 and 11 + 5.5 12 + 5.5 and 13 + 5.5
Standard Top and Bottom Segment Thicknesses (inch)	0.20 + 0.15 0.24 + 0.15	0.30 + 0.18 0.34 + 0.18	0.24 + 0.20 0.28 + 0.20	0.33 + 0.22 0.39 + 0.22	0.35, 0.43, 0.47 and 0.51 + 0.22
Optional: Different Top/Bottom Segments are available	On request	On request	Available on request	Available on request	Available on request
Approx Wt. – kgs/m (lbs/ft). Vary on thickness/tension	2.8 (1.8)	3.1 (2.1)	4.3 (2.9)	4.7 (3.2)	7.8 (5.2)
Standard Segment Rubber: Abrasion + cut resistant →	RMA-1 – 50mm3	RMA-1 – 50mm3	RMA-1 – 50mm3	RMA-1 – 50mm3	RMA-1 – 50mm3
Optional Rubber: Economical for standard duty →	RMA-2 - 150mm3	RMA-2 - 150mm3	RMA-2 - 150mm3	RMA-2 - 150mm3	RMA-2 - 150mm3
Other Optional Segment Rubber	Heat-Resistant	Heat-Resistant	Heat-Resistant	Heat-Resistant	Heat-Resistant
Other Optional Segment Rubber	Oil-Resistant	Oil-Resistant	Oil-Resistant	Oil-Resistant	Oil-Resistant
Other Optional Segment Rubber	Low Temperature	Low Temperature	Low Temperature	Low Temperature	Low Temperature
Other Optional Segment Rubber	Friction Back	Friction Back	Friction Back	Friction Back	Friction Back
Available in Custom Kits to suit any belt width (mm)	800, 1000, 1200, 1400 and 1600 +	800, 1000, 1200, 1400 and 1600 +	800, 1000, 1200, 1400 and 1600 +	800, 1000, 1200, 1400 and 1600 +	800, 1000, 1200, 1400 and 1600 +
Available in Custom Kits to suit any belt width (inches)	30, 42, 48, 56, 60+	30, 42, 48, 56, 60+	30, 42, 48, 56, 60 +	30, 42, 48, 56, 60 +	30, 42, 48, 56, 60 +
Available in Rolls w/complete hardware (meters / feet)	3, 5, 10, 15, 25 m 10, 16, 33, 50, 82ft	3, 5, 10, 15, 25 m 10, 16, 33, 50, 82ft	3, 5, 10, 15, 25 m 10, 16, 33, 50, 82 feet	3, 5, 10, 15, 25 m 10, 16, 33, 50, 82 feet	3, 5, 10, 15, 25 m 10, 16, 33, 50, 82 ft.
<b>COMPARE w/Super Screw® models③</b>	35 to 80	85 to 105	85 to 165	125 to 205	125 to 250
Super Screw® N/mm tension rating (PIW tension rating) <b>Check for failures from over-tension &amp; scraper damage.</b>	315 to 800 (200 to 450)	800 to 1000 (450 to 570)	800 to 1600 (450 to 914)	1250 to 2000 (710 to 1140)	1250 to >2000 ??? (710 to >1430 ???)
Super Screw® total effective splice width mm (inches)	72 - 160 (2.8 - 6.3)	156 (6.2)	156 - 266 (6.2 - 10.5)	156 - 266 (6.2 - 10.5)	266 (10.5)
Super Screw® standard rubber abrasion resistance rating <b>A: Primary® (cheaper rubber) B: Original/Evolution® &gt;\$</b>	A: 150 - B: 50 mm3 RMA-2 - RMA-1	A: 150 - B: 50 mm3 RMA-2 - RMA-1	A: 150 - B: 50 mm3 RMA-2 - RMA-1	A: 150 - B: 50 mm3 RMA-2 - RMA-1	A: 150 - B: 50 mm3 RMA-2 - RMA-1

① Custom Legend Screw Splice® patented fasteners - available for any belt width, thickness, specification, and tension rating and supplied either in rolls to 25 meters (82 feet) or custom kits for any belt width, delivered complete, ready for immediate installation.

② Recommend application of RubbaFIX® hot rubber system to be applied over top of any mechanical fastener, as may be required with many mechanical fastener installations, even including the pricy ones, to ensure an even, flat top cover for unobstructed scraper operation and to prevent scraper from ever getting caught on uneven cover, causing damage to belt and premature splice failure.

③ Note: For comparison reference purposes use only. Legend® specifications and design may vary and even exceed Super Screw® specifications and performance. Super Screw® specs referenced herein as available from MLT. E+OE: Errors or omissions are strictly unintentional. Please contact 2SP for complete details, professional recommendation to meet any requirement and a custom quotation. Select international distribution. Legend® standard & custom fasteners are readily available either from stock to ~2 weeks. Please request, complete, and return questionnaire.

**2SP Solution Providers Inc.** [www.2SP.ca](http://www.2SP.ca) Tel: +1.514.335.4275 WhatsApp/FaceTime: +1.514.778.0265 or +1.514.512.6176 [info@2SP.ca](mailto:info@2SP.ca)

© Copyright 2024 – 2SP Solution Providers Inc. ® Manufacturer's Registered Trademark. Patented. Distribution Opportunities Available.