



## Many Damaged Belts Can Now Be Saved. Upgrade to the Only One-Part Rubber Repair

*Exclusive Master Distributor*

Safe to view videos: <https://vimeo.com/282732075> <https://RubbaFIX.com.au>



By covering Legend®, Super Screw® and copies of mechanical screw fasteners, scrapers can be prevented from catching on exposed edges of top belt cover.



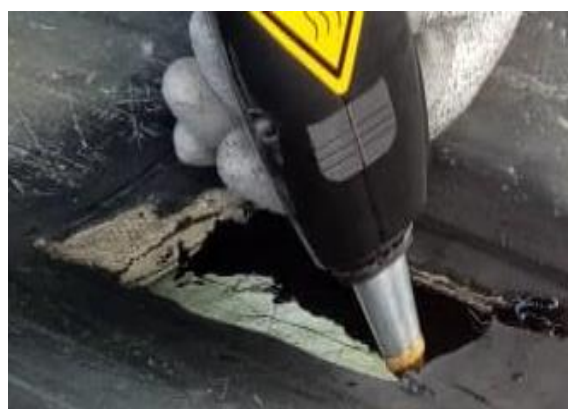
And now with a smooth and even top cover, no more damage to belt and screw fasteners, and scrapers can clean more effectively.



Permanently repair large belt edge & cover damage quickly w/ Melta Pro® machine. Only RubbaFIX® remains 70 durometer = will not harden & crack like polyurethane.



Belts can be repaired just like new.



Repair smaller damage quickly with the Melta Mini applicator gun. And with thermal application = Outstanding adhesion + long service life.



Secure buckets on elevator belts by applying bead around.



Melta Mini® for small and Melta Pro® w/heated hose for the largest belt repairs. 115/1/60 or 230/1/50.



No mixing is ever required and unlike polyurethane = no more waste.

## **Proven advantages and benefits of RubbaFIX® with only 1 component – NOT available with any 2-component polyurethane kits:**

- No longer need to mix and never any wastage. Unlimited shelf life, even when opened.
- Simply add rubber pucks to applicator gun, heat and apply to prepared, preheated areas to be repaired.
- If belting damaged all the way thru, add reinforced fabric sheets between top & bottom RubbaFIX® layers.
- RubbaFIX® rubber remains a constant flexible 70 durometer = will not harden or crack. And can be reworked by reheating at any time if repaired area is damaged again.
- Outstanding adhesion to rubber and Nitrile solid-woven belting, metals, fiberglass and much more.
- FRAS certified. Fire-resistant and anti-static for underground mines and critical locations.
- NO toxic fumes, unlike polyurethane – refer to the MSDS.
- Ready to buff and return to service in only 30 minutes.
- NO need to ever clean the applicator gun – Just leave any unused rubber and you are ready for the next task.
- Repairs to all type of conveyor belts; chute and hopper linings; ball mill rubber liner bars; tank linings; rubber-lined pumps, impellers, valves, and diaphragms; filler putty between rubber sheeting; pulley lagging; rubber conveyor rollers; non-structural, off-highway tire repairs; rubber expansion joints.
- Unlike cold patches and bulky belt clips, the repaired areas remain even with the top cover, ensuring that sharp scrapers do not get caught on an uneven cover or belt edge – and will clean belt more effectively.
- Approved for operation of SSP-770 Ceramic Belt Cleaners® and other model belt scrapers.
- Fill the open void area above mechanical belt fasteners up to top belt cover level. This provides an extra protective layer to resist moisture, corrosion, abrasion, and especially impact. **Damage is avoidable:** Ensure that sharp tungsten carbide scrapers blades do not get caught on the edge of uneven steps and rip the fastener and damage belt
- We can equip your Team with RubbaFIX® rubber and Melta Pro® and Melta Mini® applicator machines and provide training so that personnel are prepared to respond immediately to repair damaged belts. Especially important when operations are remote, downtime is critical and contractor costs are high.

## **2SP Solution Providers Inc.**

International: +1.514.335.4275    WhatsApp/FaceTime: +1.514.778.0265 or +1.514.512.6176    [info@2SP.ca](mailto:info@2SP.ca)

[www.2SP.ca](http://www.2SP.ca)