



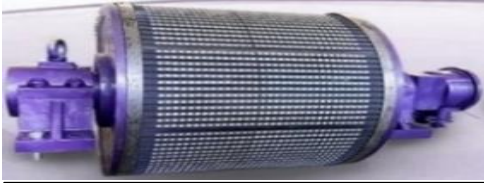
**Bob Spicer** – Eng. EMBA  
 Founder & Managing Director  
 Corporate: +1.514.335.4275  
 Mobile, WhatsApp, FaceTime:  
 +1.514.778.0265  
[Bob@2SP.ca](mailto:Bob@2SP.ca)



**Leonardo Arrieta** – DEC  
 V-P Development & Training  
 Corporate: +1.514.335.4275  
 Mobile, WhatsApp, FaceTime:  
 +1.514.512.6176  
[Leonardo@2SP.ca](mailto:Leonardo@2SP.ca)



**Jason Brazeau** – BSc.  
 General Manager  
 Corporate: +1.514.335.4275  
 Mobile, WhatsApp:  
 +1.438.345.4245  
[Jason@2SP.ca](mailto:Jason@2SP.ca)



**Ask for Performance Guarantee**

**JASUNG®** PMDD eliminates the need for motor, coupling, gearbox and pulley, saving energy, space, maintenance and downtime.



**JASUNG®** PMSM Permanent Magnet Synchronous Motors. Pumps, Ball Mills, Fans and more.

**JASUNG®** Advanced Technology PMDD Permanent Magnet Direct Drive Conveyor Pulleys.

- High torque @ low speeds. • Reduce energy ≥30%. • Sealed X-P rated. • 11kw to 2000kw. • 0.8 to 6m/s. • ≤2400mm dia.

**Ask for Technical Article: Advanced technology in belt conveyor drive pulleys: Permanent magnet direct drive pulley system.**

**AURY®** Largest manufacturer of precision vibratory screens & dewatering equipment, centrifuges, spare parts & replacement screen decks.

**Why Operations Choose AURY®?** • Lower Power Consumption. • Longer Screen Life & Durability. • Enhanced Screening. Performance.

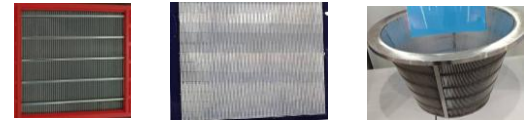


**AURY®** CMS Custom Full Life Cycle Management Condition Monitoring System. Shift from Reactive to Predictive Maintenance. Fault elimination. Slash maintenance costs and downtime. Increase production capacity.

**RECENT CASE STUDY:** Coal wash plant, CMS detected an abnormal vibration trend on a critical vibrating screen. The CMS system's analysis pinpointed the issue: early inner-race damage on a specific SKF bearing. Armed with this precise forecast, the plant scheduled a replacement during a planned stop, avoiding an unplanned shutdown, and confirming the diagnostic.

**AURY®** Super Abrasion-Resistant Screen Panels. Proven To Far Outlast and Outperform the Competition.

**ASK FOR FREE TRIAL ORDER - LIMITED TIME OFFER**



**AURY®** Proprietary alloy nitriding lasts ~300 to 500% longer than conventional screens. Significantly reduces downtime and costs, ensuring a stable, high efficiency with >95% media recovery.

**Ask for Test Report: Screen Abrasion Resistance and Durability Comparative Test Report Results.**

**EVERGREEN®** The largest manufacturer of precision flotation parts and filter plates, accessories and cloth - all makes, models and sizes.



Proven performance and durability ≥1.5 times OEM. The difference is in engineering, materials, Q.C. and service.

Vertical, membrane, chamber filter plates + all accessories.

PP, PE, Nylon filter cloth.

Scrubber/ball mill linings.

**Ask for Report: Comprehensive Analysis of Common Flotation Equipment Faults: From Diagnosis to Resolution in One Step.**

**Ask for Report: How to Improve Ball Mill Efficiency.**

**2SP Solution Providers Inc.**

[www.2SP.ca](http://www.2SP.ca) [info@2SP.ca](mailto:info@2SP.ca)

**ExcelSense® Cameras, Sensors and Retrofit Enclosures.**  
**The Only Electronic Self-Cleaning Wiper. No moving parts.**  
**Guaranteed 100% maintenance-free. Extensive patents.**

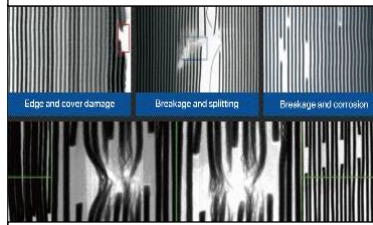


**Separating Personnel from Hazards**

- Autonomous & remote control.
- Transfer point monitoring.
- Conveyor chute monitoring.
- Haul trucks. • Equipment safety.
- Ship & loading bay operations.
- Hazardous/toxic environments.
- U/G continuous miners.
- Stackers and reclaimers.
- Silo and bin monitoring.

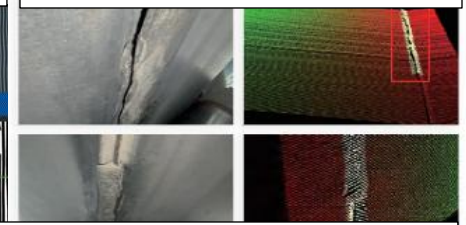
**DMC® X-Ray Steel-Cord Conveyor Belt Monitoring**

Fixed, Mobile + Hand-Held Models.



**DMC® Rip Detection w/Instantaneous STOP**

The only way to get the full picture.



**Ask for: Comparison of X-Ray vs. Magnetic**



**Permanently Repair Damaged Belting – Upgrade to the Only One-Part Rubber Repair.**



Upgrade to LEGEND® screw splice



Unlike polyurethane, no mixing or waste & non-toxic. Unlimited shelf life, even after opening.

By covering Super Screw® and other fasteners, prevent scrapers from catching on edge of uneven belt steps, damaging fasteners & belting. Two applicator models for spot to largest repairs. 115/1/60 + 230/1/50

Long edge repairs. Apply hot + remains 70 duro = exceptional adhesion and no cracks. Ready in only 30 min. or less.

Checkout these safe to view videos:

<https://vimeo.com/282732075>

<https://RubbaFIX.com.au>

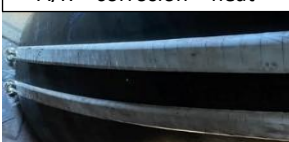
**LEGEND® Screw Splice**



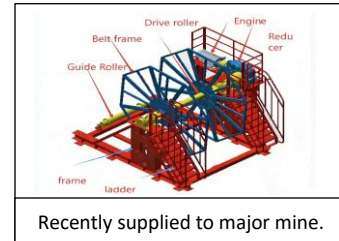
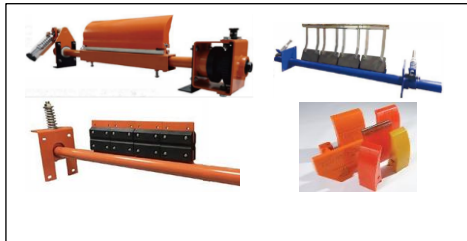
**LEGEND®** The proven alternative to vulcanization, especially when time, location, and weather are limiting factors. We radically improved and patented the newest mechanical screw splice and patch repair system. Top and bottom segments are factory vulcanized at center = highest impact resistance, and no more spacers. A reliable solution, easy to install, with fast delivery and more reasonable cost vs. the competition. Highest 2,010 PIW (2,800 N/mm) rating.

**Ask for: Legend® Screw Splice and Insert Repair General Specifications.**

**Ceramic Belt Cleaners®**  
A/R + corrosion + heat



Guaranteed outlast PU ≥2 times



Recently supplied to major mine.



**Solids removed from sludge settling ponds.**



**5.0 SG iron ore recovery.**



**U/G drainage sumps.**



Mobile solids transfer pumps vacuum recover thick abrasive, corrosive and oily sludge, muck and automatically pressure discharge ≥3,000 feet (≥1 km.) With no rotating parts or electricity = proven reliability.



**SUPAVAC®** spare parts, accessories, and full service center.