

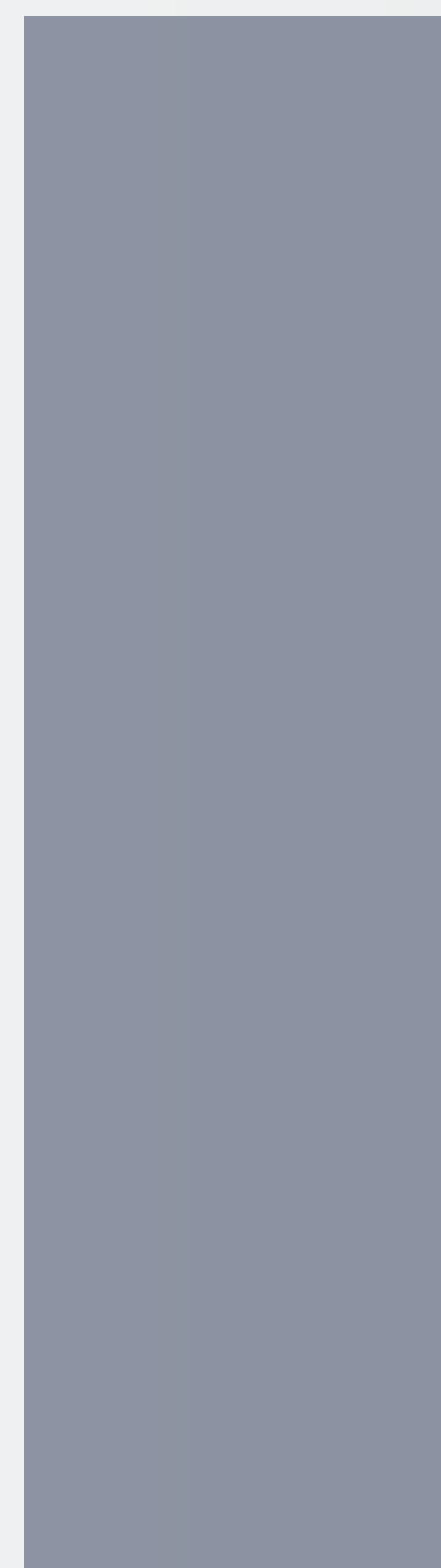


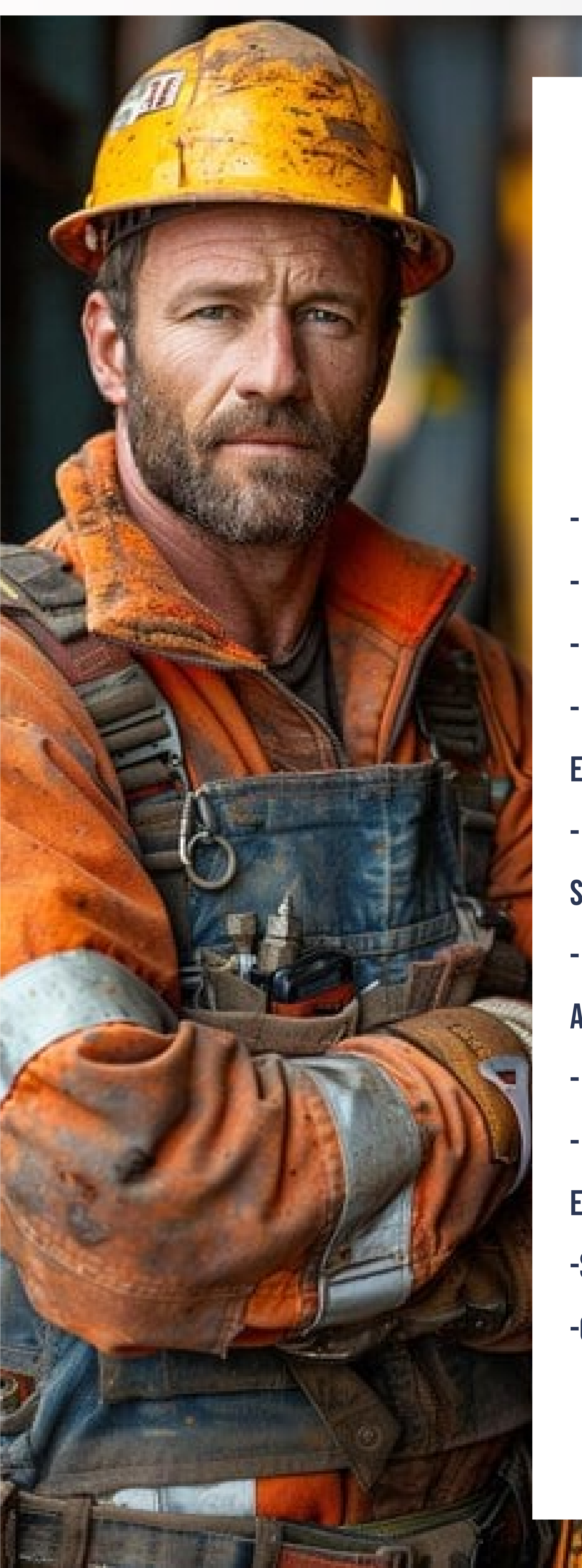
CONVEYOR & PUMP  
INNOVATIONS



**PROVEN  
SOLUTIONS  
DELIVERED  
WORLDWIDE**

**PRODUCTS CATALOG**





# TABLE OF CONTENTS

- COMPANY OVERVIEW	3
- OUR TEAM	4
- PRODUCT CATEGORIES OVERVIEW	5
- BELT CONVEYOR MAINTENANCE EQUIPMENT AND ACCESSORIES	6
- CUSTOM CONVEYOR BELT MONITORING SYSTEMS	15
- SOLIDS TRANSFER PUMPS, DREDGES AND ENGINEERED SYSTEMS	18
- PROTECTION/REPAIR	22
- PLANNED SERVICE CALLS & 24/7 EMERGENCIES	28
-SPECIAL SECTION	29
-ORDERING INFORMATION	30



# COMPANY OVERVIEW

---

## WELCOME TO 2SP CONVEYOR & PUMP SOLUTIONS.

Founded in 2006, 2SP Conveyor & Pump Solutions has been a leader in providing high-quality industrial mining equipment and services. Our mission is to deliver innovative and reliable solutions that enhance the productivity and efficiency of our clients.

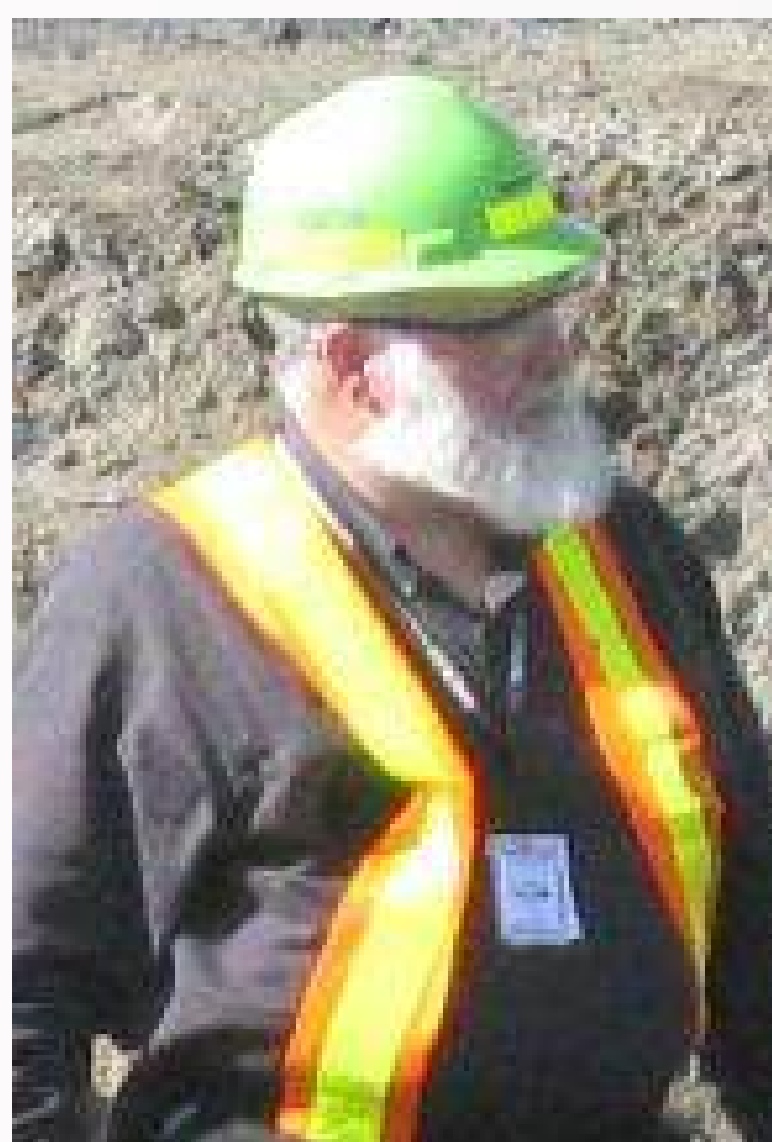
## WHY CHOOSE US?

- Over 15 years of industry experience
- State-of-the-art products with rigorous quality control
- Dedicated support team available 24/7
- Performance guaranteed



# OUR TEAM

---



Bob Spicer – Eng. EMBA

Founder & Managing Director

Telephone: +1.514.335.4275

WhatsApp or FaceTime: +1.514.778.0265

Bob@2sp.ca



Leonardo Arrieta

V-P Development & Training

Telephone: +1.514.335.4275

WhatsApp or FaceTime: +1.514.512.6176

Leonardo@2sp.ca



Patuma Kazembe

Technical Sales Manager

Solwezi, Zambia

WhatsApp: +260.768.168.700

Patuma@2sp.ca

# PRODUCT CATEGORIES OVERVIEW

---

## DISCOVER OUR PRODUCT CATEGORIES:

1. Belt Conveyor Maintenance Equipment and Accessories – High-performance equipment for demanding industrial mining tasks.
2. Solids Transfer Pumps, Dredges and Engineered Systems – Pneumatic-transfer solids pump that are able to reliably vacuum recover tons and tons of thick abrasive, corrosive and oily waste with hard solids up to 75mm (3”).
3. Safety Equipment – Essential gear to ensure workplace safety.
4. Protection/Repair
5. Custom Conveyor Belt Monitoring Systems.
6. Planned Service Calls & 24/7 Emergencies
5. Parts & Accessories – Components and add-ons to enhance equipment functionality.

## WHY CHOOSE US?

Each of the products we offer are designed to meet the highest standards of performance and durability.





# BELT CONVEYOR MAINTENANCE EQUIPMENT AND ACCESSORIES

---

## AIRSCRAPE®

- MSHA compliant. Workers finally safe from dust.
- NO contact skirting = Stop belt wear and reduce drive motor power requirement.
- Patented suction effect keeps material on belt.
- Easy installation on both sides of loading point, normally using the existing clamping system.



## TAILSCRAPE®

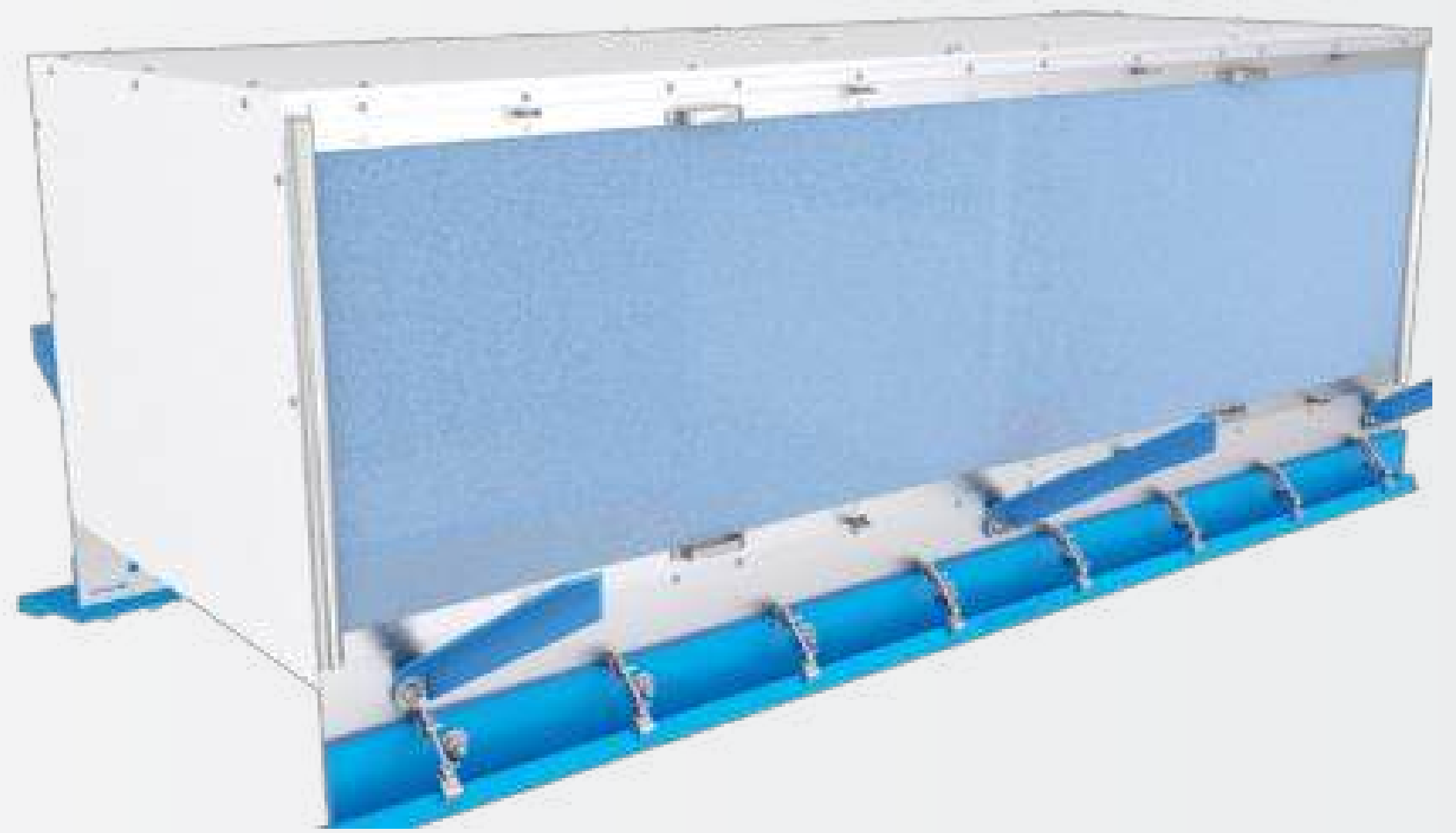
- NO BELT CONTACT, NO BELT DAMAGE
- HOVERS OVER BELT
- IDEAL SUPPLEMENT TO THE AIRSCRAPE
- WEAR FREE
- MAINTENANCE FREE
- EASY INSTALLATION



---

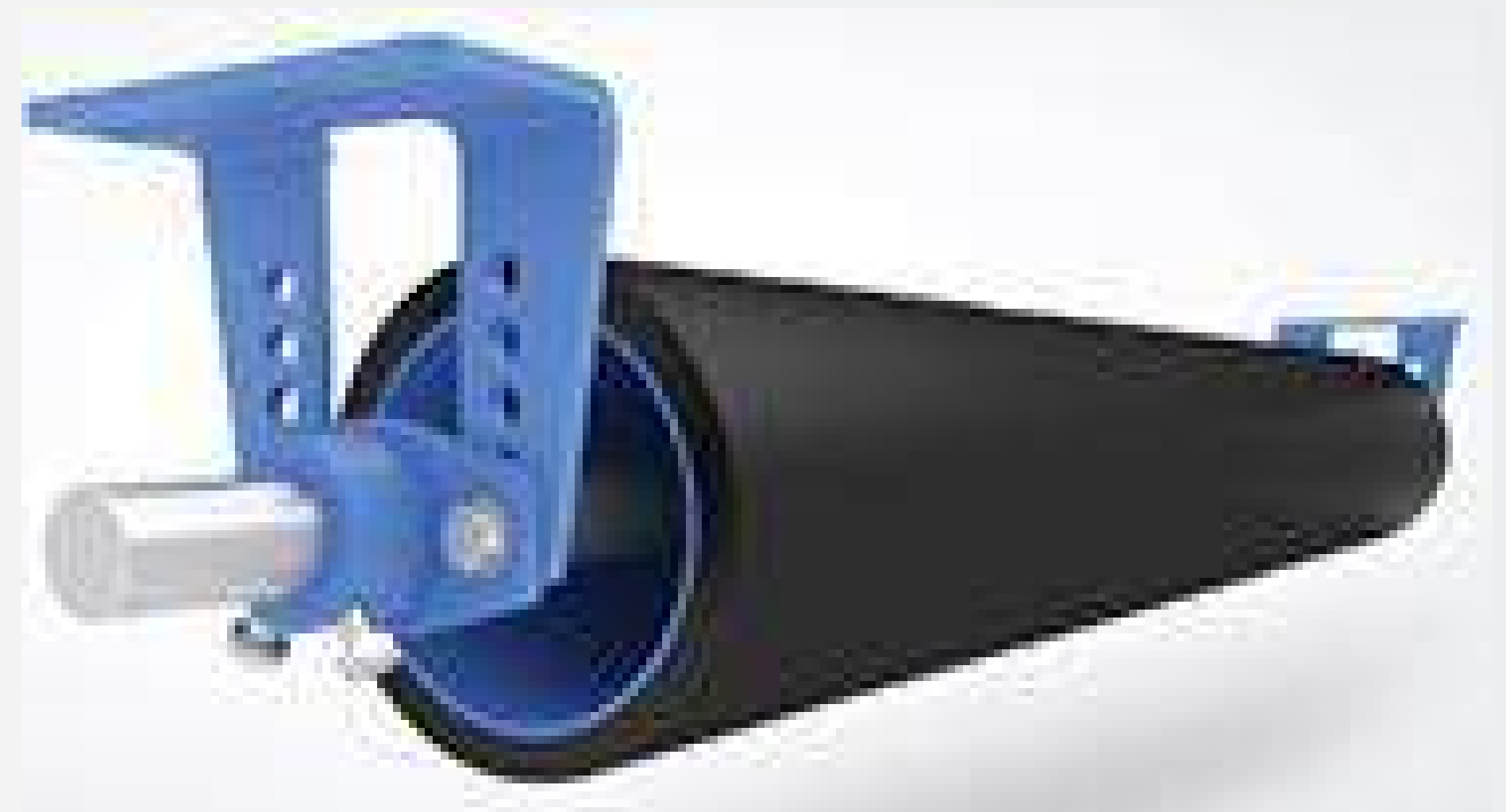
## DUSTSCRAPE®

- MSHA compliant. Zero energy usage.
- Significantly reduce dust emissions and minimize silica dust exposure.
- Easy install w/AirScrape or retrofit to existing system
- Maintenance-free and contactless
- DustBox + Sidewall Seal + AirScrape = DustScrape



## PRIMETRACKER®

- Cylindrical tracker w/auto misalignment correction.
- Durable
- Also works in reverse
- Easy installation
- E-Prime Tracker w/sensors for remote monitoring.



---

**RUBBAFIX®**



Save the Belt. Only RubbaFIX® can do what no polyurethane two-component repair kits can!

-The only one-component rubber system for a permanent repair of damaged conveyor belts.

-No mixing required

-Remains constant 70 durometer = NO hardening and cracking = exceptional adhesion.

-Unlimited shelf life.

-Non-toxic.

-FRAS certified.

-Applied hot with Mini or Melta Pro applicator.

-Same surface prep as polyurethane

-Unused rubber remains in applicator, ready for the next task = NO cleanup. And ready in only 30 minutes.

View these work safe videos: <https://vimeo.com/282732075>

<https://RubbaFIX.com.au>



---

RUBBAFIX®



Mini & Melta Pro models for small to the largest belt repairs tasks. 115/1/60 or 230/1/50.

Permanently repair long rips, belt edges, holes in cover, gouge damage. See how simple it can be to fix.



By covering Super Screw®, Legend®, Flexco® and other screw fasteners, we can proactively prevent scrapers from catching on the uneven step edges of belt cover and damaging belt and screw fastener. Polyurethane hardens and does not last.



---

## **BELT CONVEYOR EQUIPMENT AND TOOLS**

• Conveyor belt vulcanizers for splicing and repair • Steel cable belt strippers • Steel cable and fabric belt skivers • Impact beds • Belt clamps • Professional tools for conveyor belt maintenance • Specialty requirements

## **ABRASION-RESISTANT RUBBER, PRIMER AND ADHESIVES.**

## **LEGEND SCREW SPLICE**

The legendary alternative to vulcanization, especially when time, location, and weather are limiting factors. We radically improved and patented the mechanical screw splice and patch repair system. And finally, a reliable solution, easy to install, with a fast delivery and at a more reasonable cost as compared with Super Screw®.

**Options include: Abrasion, heat, oil and low-temperature resistant & friction back. 316 stainless anti-magnetic service.**



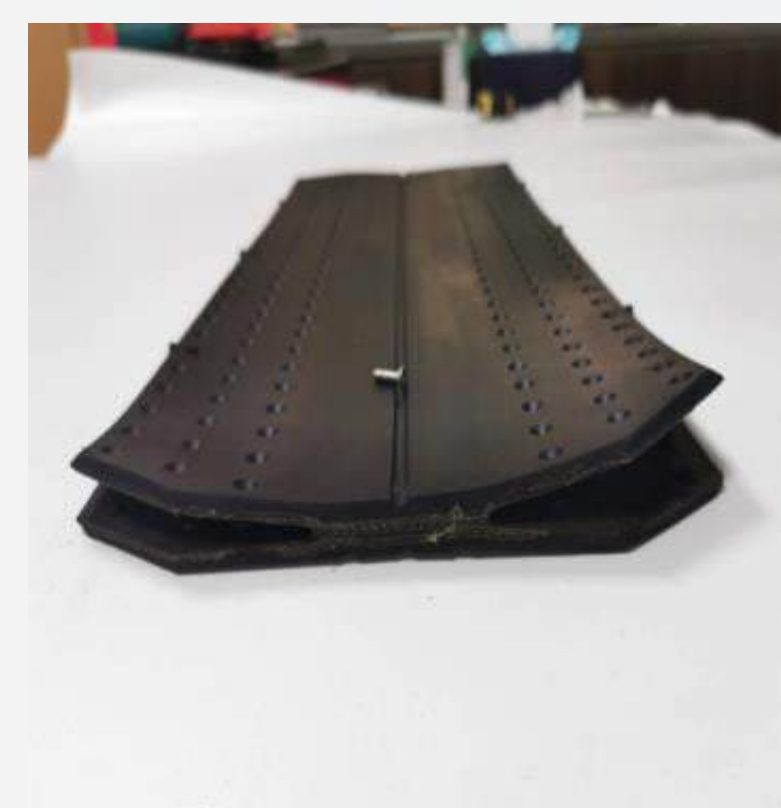
---

## LEGEND SCREW SPLICE

**Patented – Legend® BH-350-XHD & BH-254 exclusively with top & bottom segments vulcanized together at center.**



Upgrade to the patented Legend BH-350-XHD – The most reliable screw splice for extreme mine-duty. Supplied with 2 rows of M5 and 2 rows of M8 screws on each side, no more spacers, titanium cloth reinforced, with the highest available tension rating up to 2,800 N/mm (2,010 PIW), top and bottom segments exclusively factory vulcanized together at center. This results in superior impact resistance, durability, and a longer service life. Premium 50mm<sup>3</sup> (RMA-1) rubber = maximum abrasion and cut resistance. Custom manufactured to requirements. Supplied in custom kits or rolls.



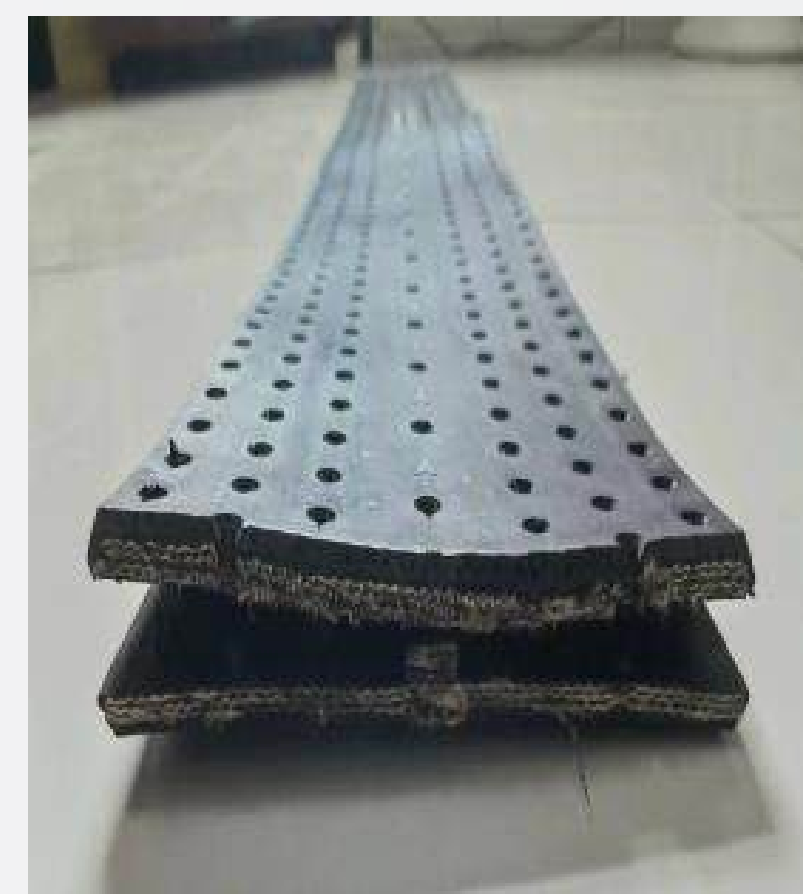
The patented Legend BH-254 – The most reliable screw splice for standard mine-duty. Supplied with three lines of M4.8 screws each side, no more spacers, titanium cloth reinforced, with the highest available tension rating up to 1,600 N/mm (1,145 PIW), top and bottom segments exclusively factory vulcanized together at center. This results in superior impact resistance, durability, and a longer service life. Premium 50mm<sup>3</sup> (RMA-1) rubber = maximum abrasion and cut resistance. Custom manufactured to requirements. Supplied in custom kits or rolls.



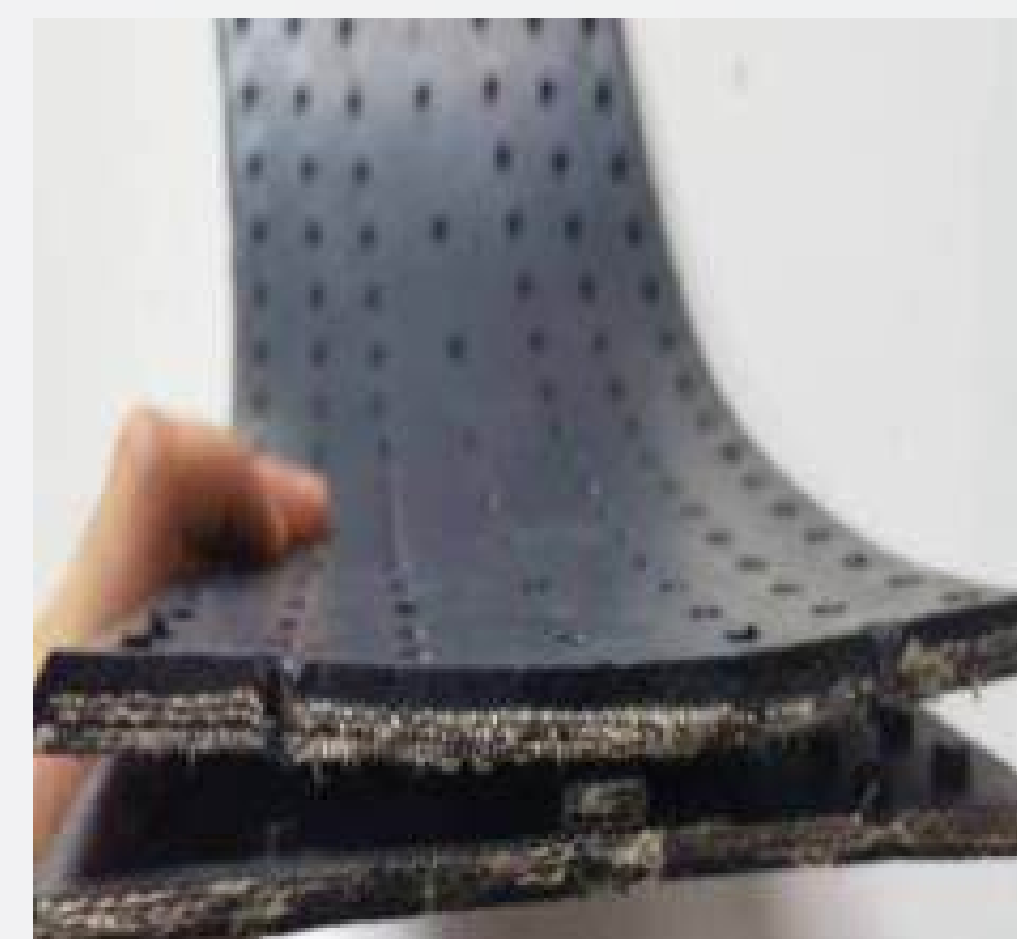
---

## LEGEND SCREW SPLICE

**Other Legend® Models include separate top & bottom segments w/positioning strip vulcanized to bottom segment.**



LEGEND BH-260-HD Split Screw Splice + Insert Splice for Isolated Damage & Long Rip Repair. One line of M4.8 + two lines of M6 screws on each side. Centre row of M6 screws secure into vulcanized rubber positioning strip, eliminates the need for spacers, provides superior impact resistance. Nuts securely vulcanized into bottom segment. Separate top & bottom segments, each with heavy-duty fabric reinforcement layers, a strong, reliable screw joint is ensured. Premium 50mm<sup>3</sup> (RMA-1) rubber. Highest declared belt tension to 2,500 N/mm (1,795 PIW).



LEGEND BH-180 Split Screw Splice + Inserts Splice for Isolated Damage and Long Rip Repair. Three rows of M4.8 screws on each side. Centre row of M4.8 screws secure into vulcanized rubber positioning strip, eliminates the need for spacers, and provides superior impact resistance. Highest declared belt tension to 1,200 N/mm (860 PIW). All nuts are securely vulcanized into bottom segment.

---

## SSP-770 CERAMIC BELT CLEANERS

**Radically cut carry back + Stop belt damage + Extend the effective service life of polyurethane scrapers by more than 4-times. 300mm to 2400mm promptly shipped, fully assembled, ready to install.**

Our users report:

Installation takes only ~2 hrs.  
Weight ~20kg (44 lbs). Much lighter weight and easier to install vs polyurethane and tungsten carbide scrapers.



Minimum adjustment required.  
Second generation made with 98% purity alumina ceramic and stainless components.



~95% carry back removal when primary and secondary Cleaners are installed.



Cleaning in year two is like on day-one. Highly resistant to the effects of abrasion, corrosion, very high heat.





# POLYURETHANE TUNGSTEN CARBIDE & ALLOY BELT SCRAPERS AND SPARE PARTS.

For applications where polyurethane or tungsten carbide scrapers and cleaners are preferred, we offer a quality cost-effective solution. And we supply replacement parts for most makes and models from inventory.

## 2sp Polyurethane Primary Scrapers



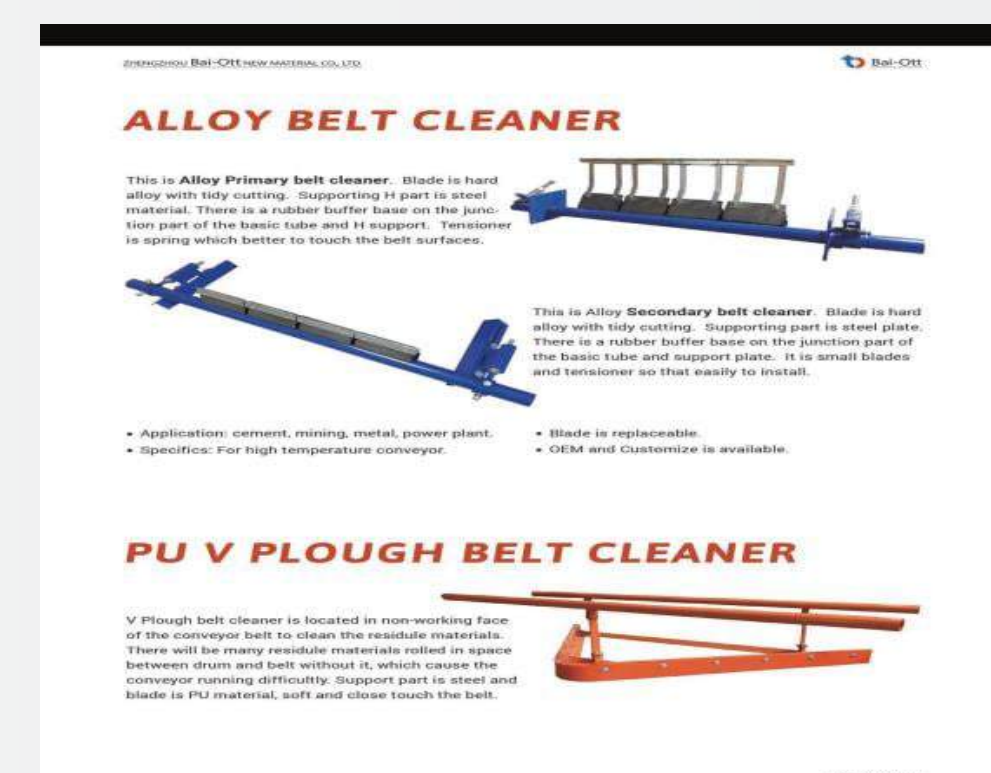
## 2sp Tungsten Carbide Secondary Scrapers



## 2sp Alloy Primary Cleaners



## 2sp Alloy Secondary Cleaners



## Spare parts for most makes and models





# CUSTOM ENGINEERED BELT CONVEYOR MONITORING SYSTEMS

---

## **INTRODUCING: The Only Rugged, Maintenance-Free, Shock-Resistant, Self-Cleaning Cameras and Optical Sensors – Patented**

Excel Sense® Crystal-clear vision in dirty and harsh environments without fluids, wipers, nozzles, external parts or any upkeep for years. Confined spaces, elevated areas, hazardous and toxic environments. Eliminate downtime due to camera maintenance or lost vision, while ensuring personnel safety. Separating your personnel from hazards



If camera is used for remote monitoring requiring in-person maintenance, then the site is not realizing the full benefit of remote monitoring.

ToughEye™ cameras:

1. Increase site safety with remote monitoring - no in-person upkeep required
2. Perform reliable remote inspection and separate personnel from toxic environments (ex: lead/zinc/uranium), which would require breathing apparatus
3. Reduce confined space and at-height work for site personnel

Full range of intelligently engineered accessories such as cables, junction boxes, mounts, and in-cab monitors, designed to adapt your ToughEye™ camera family to virtually any field setup including your existing camera system.

Example of sectors of activities:

Mining, Mineral Processing and Cement Applications, Autonomous equipment, chutes and transfer points, haul trucks, u/g load haul dumpers, continuous miners, bin & silo monitoring, loading bay, stackers & reclaimers, ship loader.

# CUSTOM ENGINEERED BELT CONVEYOR MONITORING SYSTEMS

---

Tougheye-1700™ Replace existing IP cameras w/o installing new cables. Digital zoom. Optional built-in integrated white light, defrost and SD card.



SENSOR-SHIELD-1600™ Upgrade existing optical sensor into a zero-maintenance, self-cleaning camera. Enclosure included.





# CUSTOM ENGINEERED BELT CONVEYOR MONITORING SYSTEMS

---



RMS International is an experienced company specializing in conveyor belt monitoring solutions. RMS is known for Non-Contact BTR-X Viper Riptech Pro Series Conveyor Belt Monitoring units, designed and manufactured in-house and based on patented and proven technology. The primary focus of RMS International solutions is to proactively monitor conveyor belts for potential failures and damages, such as misalignment, tears, rips, product spillages, belt breakages, product oversize, feeder automation, bearing vibration and temperature, overlapping on bulk material conveyors.

The main benefits of using RMS International's radar conveyor belt monitoring solutions include:

1. Prevention of production loss.
2. Reduce unplanned downtimes.
3. Preventing structural damage.
4. Enhancing safety.
5. Increasing start up-time.

Smartlink remote monitoring available. Turnkey installation and training worldwide are included. Support services to include SLAs (Service Level Agreements) for conveyor weight-o-meter calibrations and maintenance, as well as providing onsite safety management on a consulting basis.



# SOLIDS TRANSFER PUMPS AND ENGINEERED SYSTEMS

---

Unlike submersible, centrifugal and diaphragm pumps, only the Original patented Supavac<sup>®</sup> pneumatic-transfer solids pump is able to reliably vacuum recover tons and tons of thick abrasive, corrosive and oily waste with hard solids up to 75mm (3”) through hose up to 50 meters (165 feet) or more with the force of up to 85 kPa (25” Hg), with an automatic cycled pressure discharge through piping up to one kilometer (1000s of feet) or more with the force of 7 bar (100 psi). And with no electricity or rotating parts, reliability and long service life is the experience.



**– Well suited for small to medium sumps and lagoons w/minimum water cover.**

## USE CASE SCENARIOS:



Engineered tough with mining in mind. Emptying underground mine drainage sumps



# SOLIDS TRANSFER PUMPS AND ENGINEERED SYSTEMS



Yes, this extremely thick oily waste is now pumpable.



Vacuum recovery spilled iron ore concentrate.



Solids can be discharged up to one km (1000s of ft) plus.



Accumulated mud and hard solids were removed from this canal with a Supavac pump.



This lined mill water sludge sedimentation pond with thick abrasive solids was emptied, with solids discharged 1,390 meters (4,300 feet) through three 100mm (4") hdpe lines for disposal with no liner damage or leaks.



Accumulated settled hydrocarbon waste was removed from storage tank for disposal with zero leaks.



This overwhelmed submersible pump rescued, repaired and returned to service.



Corrosive service with a Supavac 316 stainless pump with zero leaks.



Accumulated mud and hard solids were removed from this canal with a Supavac pump.



# SOLIDS TRANSFER PUMPS AND ENGINEERED SYSTEMS

---



Suspended pump recovering petroleum cake from this 1 million gal. Tank.



Recovery of bitumen and sand at oilsands tailings pond.

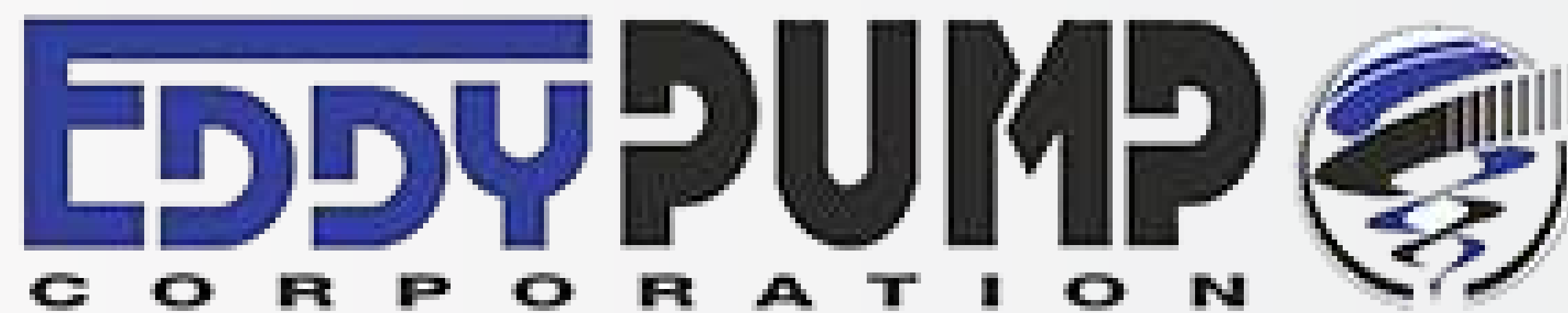


Waste from this barge removed and transferred for disposal.



# SOLIDS TRANSFER PUMPS AND ENGINEERED SYSTEMS

---



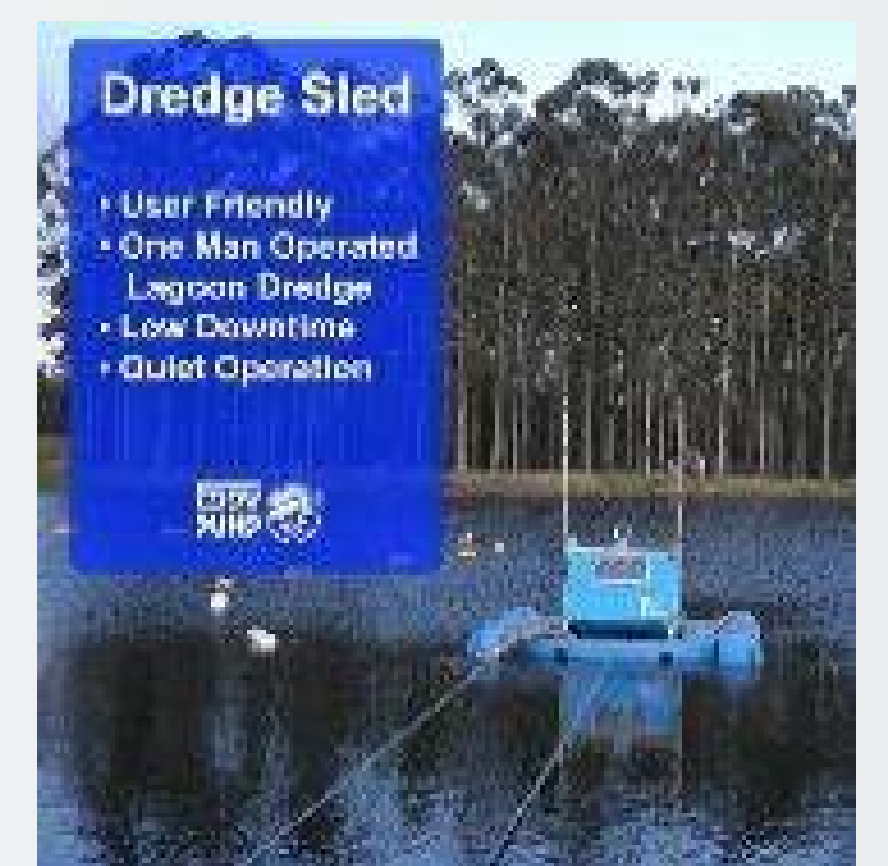
The EDDY Pump's unique design has no close tolerances between rotor and volute, enabling pumping of low and high pH abrasive slurries without pump clogging and wetted parts being worn down and losing suction.



The patented Dredge Sled lagoon dredging equipment is highly engineered for submersible dredging with the ability gently slide along the bottom to pump highly viscous or abrasive material, sludge, muck, paste, high solids, and other harsh pond pumping applications.

**Whatever your needs or industry, we have a solution!**

**• Mine Pits • Tailings Ponds • Poly-Lined Tailings Ponds • Mineral Recovery • Mine Dewatering • Mine Sumps • Process Pumps • Mining (Pumping Target Material) • Froth Flotation**



# PROTECTION/REPAIR

---

## NRX NANOPRIME® ADVANCED TECHNOLOGY

This proprietary water-based reactive system contains no VOCs, is non-toxic, non-flammable and eliminates expensive, time-consuming sandblasting surface preparation with a simple, low-cost water wash.

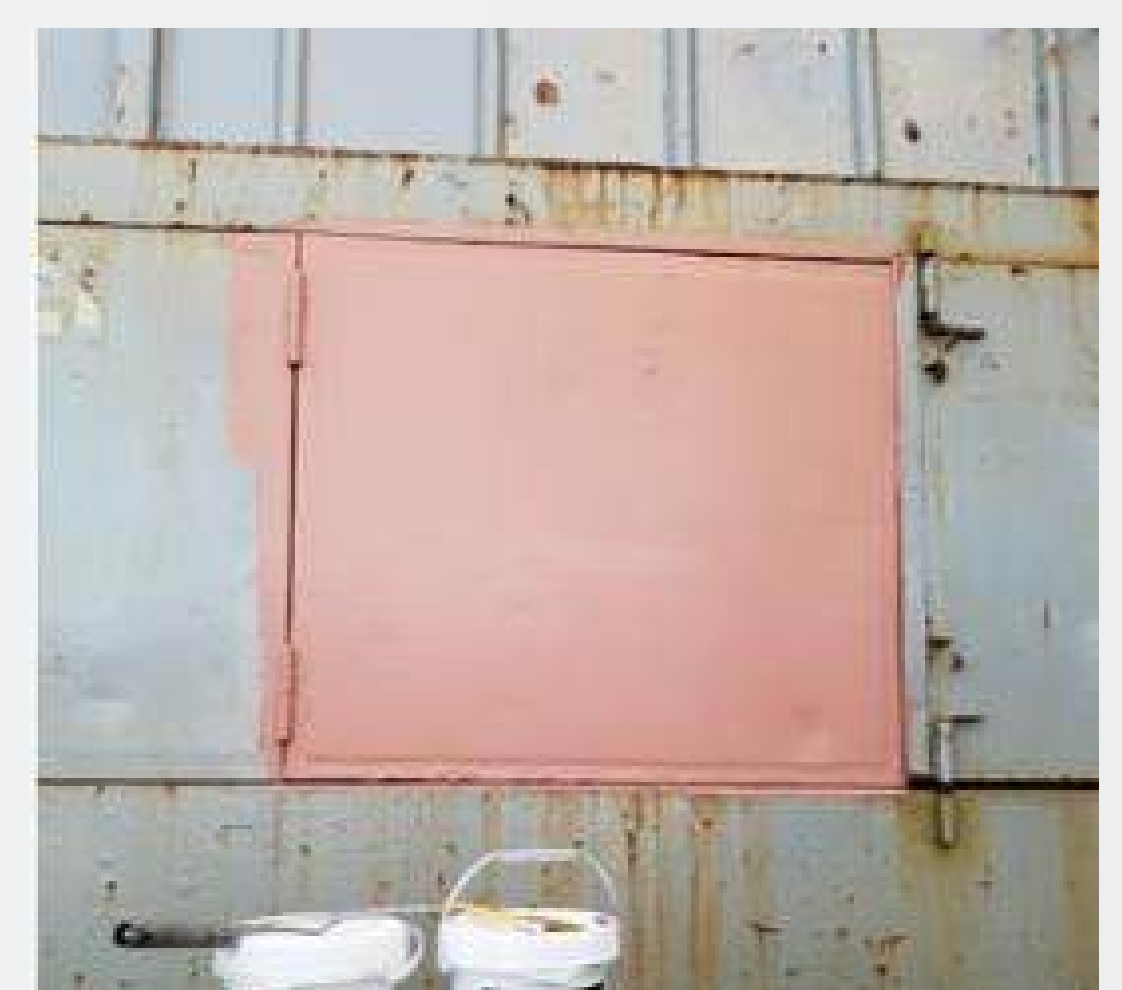
NanoPrime® Advantages & Benefits Delivered to the Operation

- **N O M O R E S A N D B L A S T I N G .**
- SAFER for employees and the environment.
- NO more heavy protective gear is required.
- CAN BE APPLIED DIRECTLY OVER RUST, galvanized, painted or unpainted steel, aluminum, and concrete w/simple wash.
- FAST application process – quick drying to the touch in only 30 minutes and is ready to re-coat in only 2 hours.
- Up to 12 months shelf life, even when opened and resealed.



How does NRX NanoPrime® Advanced Technology Work?

Works by chemically reacting with iron and iron oxide (rust) to form iron phosphate and creates a Nano bond with both metallic and painted surfaces. The chemically bonded layer is insoluble and extremely corrosion resistant. This “bonding” process also provides superior adhesion and resiliency and stops under-film corrosion that occurs when conventional coatings are damaged. Primer is thixotropic. The elasticity makes it very durable in temperature ranges from -67C to +200C (-90F to +400F).



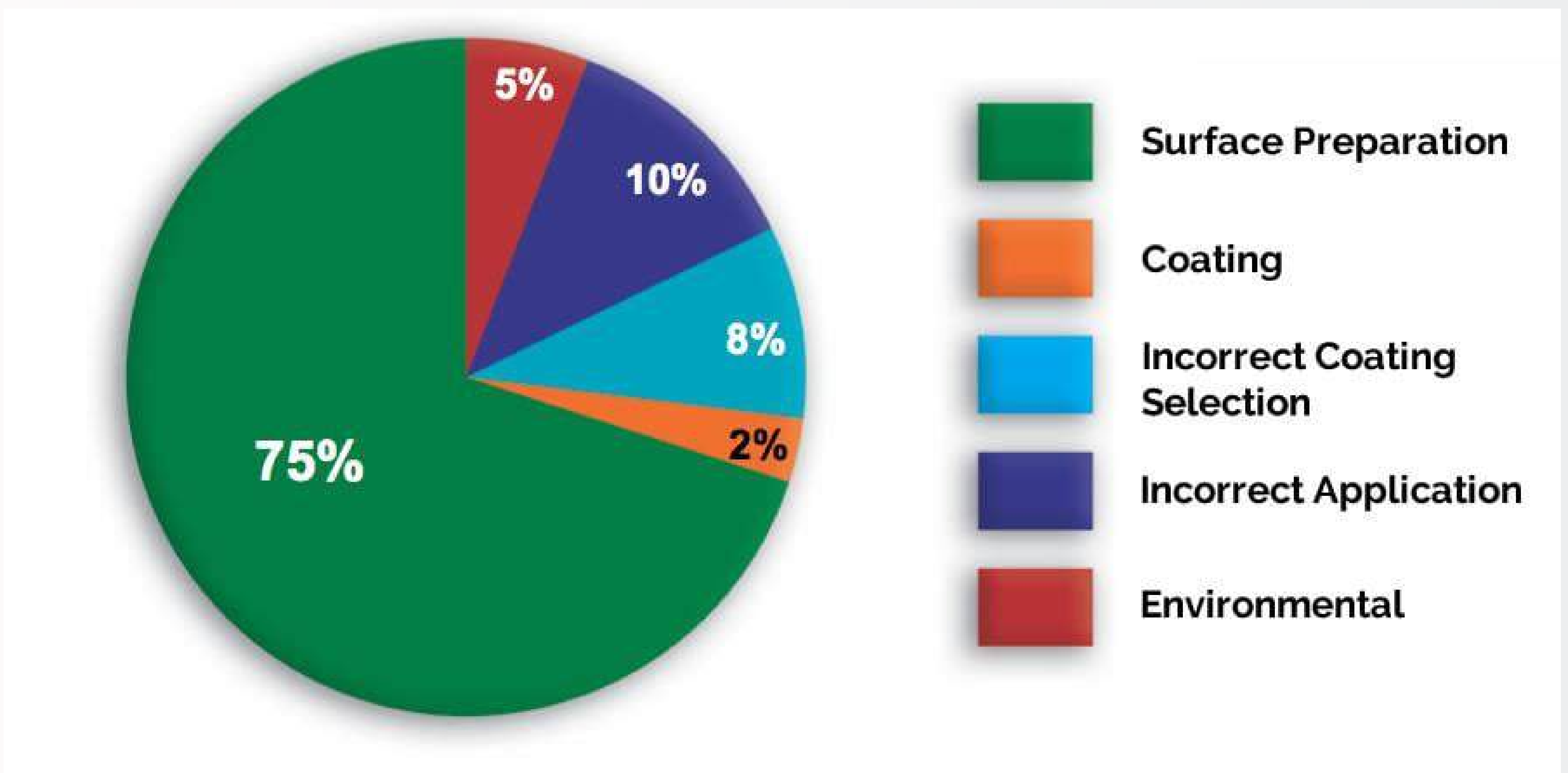


# PROTECTION/REPAIR

---

## NRX NANOPRIME® ADVANCED TECHNOLOGY

About 70% of the cost and 75% of the failures of coating systems relate directly to surface preparation. So why do coatings fail?



# PROTECTION/REPAIR

---



## **Exceptional Protection against Extreme Abrasion and Corrosion.**

There is a difference: Only Dura-Coat® premium advanced technology epoxies are specially formulated w/proprietary ingredients enabling:

1. Application during high humidity – due to enhanced hydrophobic properties.
2. Exceptional adhesion – even applied thick w/minimum substrate preparation.
3. Safe for personnel – NO dangerous toxic warnings. Check other product MSDS.

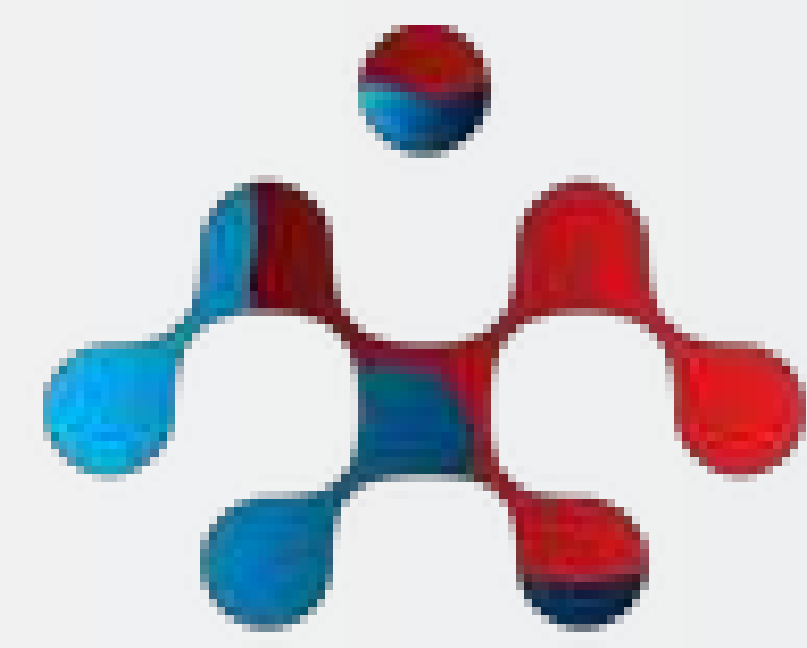
CASE STUDY: After a 7+ month evaluation on cyclone cluster and with outstanding results, this major African copper mine, part of major Canadian mining group, just placed a repeat large order of premium Dura-Coat FAST 356 extreme abrasion-resistant epoxy-ceramic.

Comments made by plant management and maintenance personnel:

1. Mixes very easily with a minimum of surface preparation required.
2. Very workable, applies easily, especially on vertical surfaces.
3. Impressive that we can now apply faster and with 1000 mil thickness.
4. Minimum noticeable wear, impressive after seven months, and far outlasting Nordbak® which requires reapplication about every month.
5. Superior adhesion under extreme abrasive and high velocity conditions.



# PROTECTION/REPAIR



**DURA-COAT**

**Exceptional Protection against Extreme Abrasion and Corrosion.**



**Applied  
mid Aug  
2022**



**Inspected  
end of Mar  
2023**



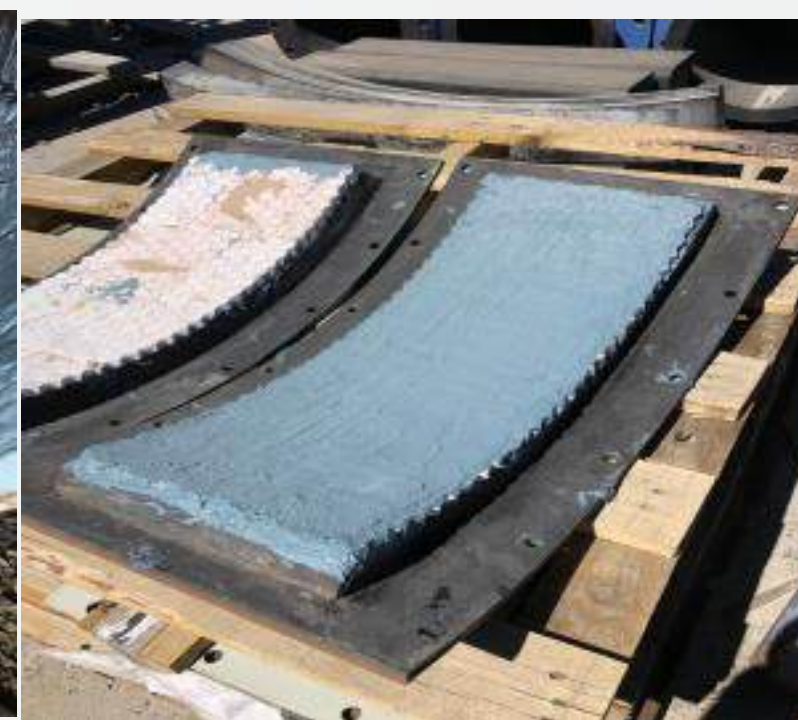
**Screw Conveyors – 356 and  
400**



**Flotation  
Cells – Metal  
400**



**Iron ore reject tailings  
dewatering centrifugal pump  
– 356**



**Copper transfer – 351,  
356 and 400**



**Plant wide  
corrosion and  
abrasion  
protection**



**Centrifugal and other pump types and pump stations – 356, 100 and 400**



**Feed  
trunnion  
– 356**



**Concrete,  
secondary  
containment,  
flooring –  
800, 830, 600,  
870**



**Mill chutes – 356**



**Flue gas –  
200HT**



# PROTECTION/REPAIR

---



**Exceptional Protection against Extreme Abrasion and Corrosion.**



**Vibrating screens**



**Heat exchanger /chiller – 200HT**



**Steel tank rivet leaks – 251**



**Tank lining – 200**



**Underwater – 121**

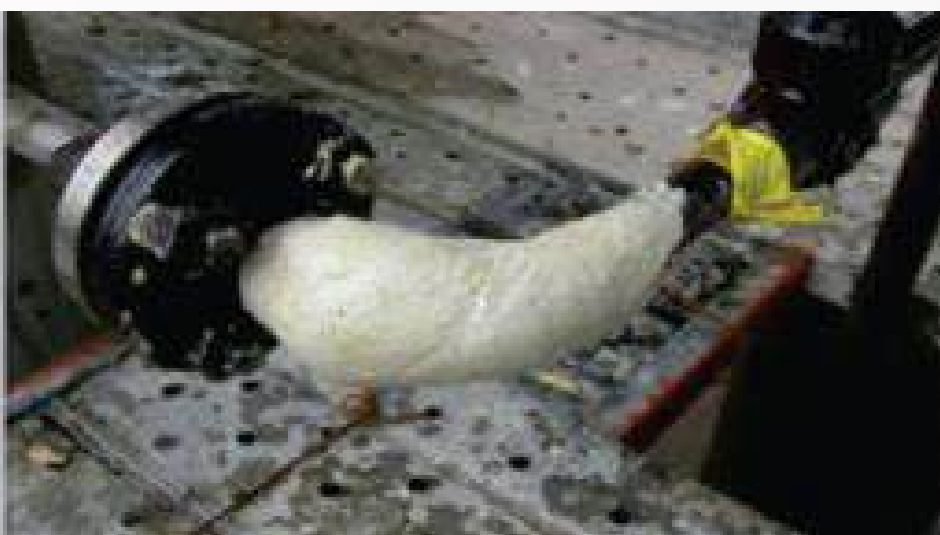


# PROTECTION/REPAIR

---



## QUICK REPAIR KITS FOR PIPE LEAKS - ASME



### Level 1 Wrap Steel for Unpressurized Leaks

- Repairs leak in 30 minutes
- Ready-to-use kit
- Available for pipes up to 18" (457 mm) diameter
- Withstand pressure up to 400 psi (28 kg/cm<sup>2</sup>)
- Withstand temperatures up to 392°F (200°C)
- Repairs T-joint, elbow joint, valve thread, valve body



### Level 2 Ultra Wrap Steel for Active Leaks

- No shutdown is required
- Repair leaks in only 15 minutes
- Available for pipes up to 18" (457 mm) diameter
- Repairs under active leak up to 150 psi (11kg/cm<sup>2</sup>) pressure
- Withstand pressure up to 500 psi (35 kg/cm<sup>2</sup>)
- Withstand temperatures up to 392°F (200°C)



### Level 3 U/Wrap for Active Steam and Chemical Leaks

- Repairs leak in 30 minutes
- Pressure up to 400 psi (28 kg/cm<sup>2</sup>)
- Temperature up to 280°C (500°F)
- Repairs w/active leak up to 150 psi 1/2" - 36" (12mm - 900mm) piping



### Standard Kit comprises:

- Stainless Steel Clamp with PTFE
- Dura-Coat 2000 Wrap Steel
- Custom Fiberglass Tape

# CONTRACT SITE SERVICES FOR PLANNED AND 24/7 EMERGENCIES

---

## OUR SERVICES:

- Installation: Expert installation services to ensure optimal performance.
- Maintenance: Regular maintenance plans to keep your equipment in top condition.
- Training: Comprehensive training programs for your team to maximize equipment use.

Our Zambian operation is based in Solwezi, in the heart of the Northwest province mining center and close to Copperbelt and southeast DR Congo. We are ready to respond to your requirements. We install everything that we sell, provide personnel training in installation, operation, maintenance and safety procedures, and are readily available for troubleshooting, and to support the guarantee. Our Group is ready to supply temporary or long-term personnel for emergency & planned requirements. 2sp Group of experienced professionals are licensed – boilermakers-welders, belt conveyor technicians, mechanical and electrical maintenance technicians and in the application nano technology eliminating sand blasting) and abrasion and corrosion-resistant epoxy-ceramic grout and coatings.

## SUPPORT OPTIONS:

Available 24/7 to assist with any queries.

Technical Support: Expert technicians ready to solve technical issues.

## CONTACT US:

For service and support, visit [www.2sp.ca](http://www.2sp.ca)

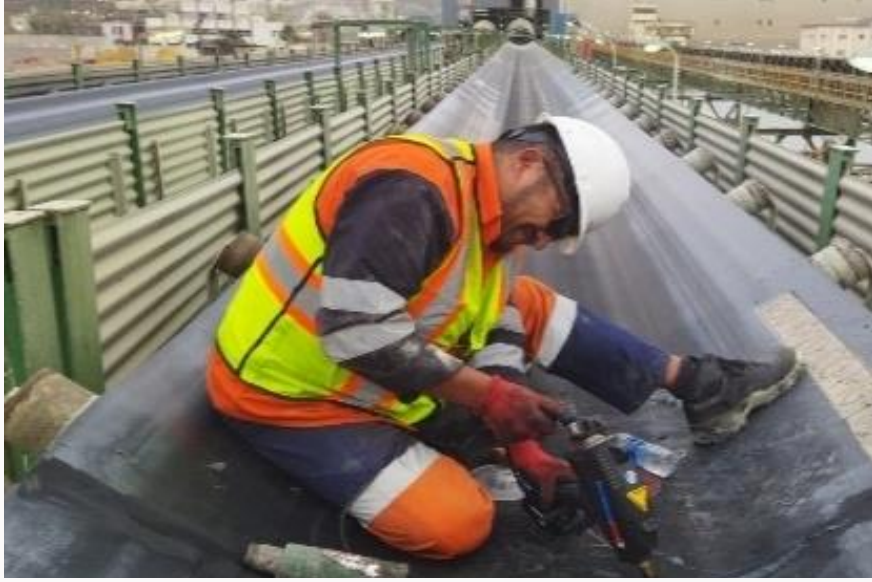
or call: +1 (514) 335-4275.



# SPECIAL SECTION

---

## FEATURED SERVICES



FEATURE: Repair belt conveyor damaged vulcanized joint with RubbaFIX®. And damaged covers, edges, rips and gouges.



NEW: Applying NRX NanoPrime® unique primer saves time and costs and eliminates the need to ever sandblast again.



FEATURE: Simply remove accumulated solids from mill sludge settling pond with Supavac® pumps. And sumps, spills, product recovery and much more.



PATENTED: Install Legend Screw Splice® mechanical belt fastener with team training – quick and simple in any weather, location and at any time.



BONUS: Repair worn-out parts w/premium Dura-Coat® abrasion-resistant epoxy-ceramic grout.

## CUSTOMER TESTIMONIAL

“2SP Solutions provided exceptional support to my team and top-quality equipment

- Timothy O'Sullivan, Operations Manager



# ORDERING INFORMATION

---

## HOW TO PLACE AN ORDER:

- Visit [www.2sp.ca](http://www.2sp.ca) and browse our catalog.
- Call Tel: +1 (514) 335-4275 to place an order with our sales team.
- Send your order details to [sales@2sp.ca](mailto:sales@2sp.ca)

## PAYMENT OPTIONS:

Credit Card

Bank Transfer

Purchase Order

## SHIPPING AND DELIVERY:

Standard Shipping: 5-7 business days

Expedited Shipping: 2-3 business days International

Shipping: Contact us for rates and availability

## RETURNS AND WARRANTY:

Must be initiated within 30 days of receipt. Contact our customer service for instructions.



---

## **2SP SOLUTIONS**

**Your Trusted Partner in Industrial Conveyor  
Equipment**

### **CONNECT WITH US:**

- **5825 Chemin St François, Saint-Laurent, QC H4S 1B6**
- **Office Hour: 08:00am - 5:00pm**
- **Tel: +1 (514) 335-4275**
- **[www.2sp.ca](http://www.2sp.ca)**
- **[sales@2sp.ca](mailto:sales@2sp.ca)**

Follow Us on Social Media:

Facebook | Twitter | LinkedIn | Instagram @2sp

**Visit our website to explore more products and services!**